

THE BUZZ

NOV/DEC 2014



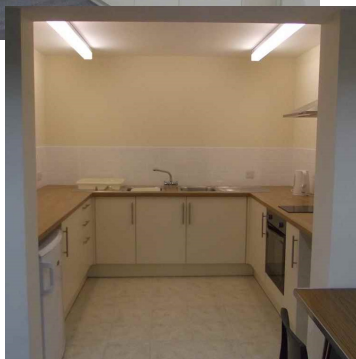
ISSUE 32

Dear Readers,

Although a little early for most of us this edition of The Buzz mentions the things that are going on in our village and nearby over the Christmas period and I'm sure all would appreciate your support.

The Village Hall Charity Group are pleased to announce that the new meeting room is now open and available to hirers.

Doesn't it look great!



Sheila Cholwill Editor

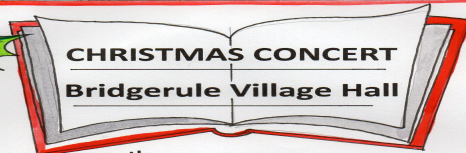
E-mail:

sheilacholwill@btinternet.com

Telephone: 01288 381350.

CONTENTS

3. Christmas Events.
- 4/5 Remembering World War 1 Event.
- 6/7. Rose's Treasures.
Tractor Run.
- 8/9. Sheila's Mentions.
10. Open Day in our Hall.
11. Village Hall built in 1957.
12. Rev. Chris Hardwick.
13. More Events.
14. Christmas Lights.
15. Short Mat Bowls.
- 16/17 Spotlight on.....
18. St. Bridget's Services.
19. Christopher and Rachel.
20. Trench Cake/ Charity
Coffee Morning.
21. Business Sponsors.
22. Methodist Chapel Services.
23. International Dance.
- 24/31. Sponsors.
32. What's On Diary.



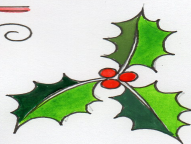
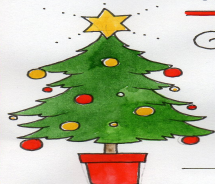
Friday 12th December at 7.30pm

The Minstrels Singers

And

Bude Metric Brass

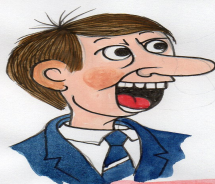
Chairman – Rev Keith Roberts



Tickets £5 to include refreshments

Obtainable from Chris 01288 381129 or

Sheila 01288 381350



Proceeds to Village Hall



Please buy tickets beforehand – we need to know numbers to cater for!

The newly formed community choir have now called themselves The Tamarside Singers. We meet each Monday and are led by Vic Bickle. We have only been together for about 7 weeks and sing a very varied programme. Monday evenings are fast becoming a favourite and we now invite **you** to hear some of the songs that we have learnt especially for Christmas at our first concert for charity.



CHRISTMAS CONCERT

By

THE TAMARSIDE SINGERS

at

BRIDGERULE METHODIST CHAPEL

Sunday December 7th at 7.00pm

Refreshments to follow

Tickets Available at £3.00 from Sheila or via any choir member.

Supporting Little Harbour Children's Hospice

Making the most of short and precious lives across the South West



**REMEMBERING
OUR
WORLD
WAR 1 EVENT!**





Rose's Treasures !

Rose and Chris have now lived in Bridgerule for almost 11 years and loved every minute of it. Both of them are keen gardeners and very early on decided to dig a few more plots of ground for vegetable growing.

From the very beginning they have been digging up bits of blue and white pottery and **stems** of old clay pipes. Very occasionally Rose manages to find clay pipes **bowls** but more often she finds pieces of very thick pottery that show the finger marks of the potter and are quite crudely made with tiny bits of grit showing in the clay. Glass appears less often but is usually quite thick chunky pieces and then there are the metal bits - buckets of the stuff—from square nails to horse shoes, knife blades, scythe blades, metal posts, horse bits, tiny metal horse shoes that we now know come from the heels and toes of hob-nailed boots and loads of small unidentifiable metal pieces that Devon's wet weather had reduced to lumps of rust.


'ASSES SHOES'

Chris calls all these finds '**rubbish**'. Rose keeps them safe in bags and boxes and calls them '**treasures**'.... eventually taking some of the most interesting items to the Barnstaple and Truro Museums. Some of the pottery has been identified as coming from the 17th and 18th Century (one or two bits possibly earlier) and asked the question 'Why are we finding so many items in our Garden?'

The reply—not too exciting—was that this area, fairly central, was the village dump and cesspit (no wonder Chris's vegetables do so well!) and was also a handy place for the blacksmith (2 doors away) to throw away his unwanted metal items. Farmers were known to add stones and other items to the soil to help break up the clay and aid drainage.





 Chris is a happy gardener as it is Rose who does a lot of the digging now - always keen to discover more precious finds. His only concern is that she digs right down (15" at least) to the layer of blue clay where most of these items have settled, disturbing the clay and bringing up lumps of it to sit on the top. Rose says husbands are never happy are they!! Watch out for Rose's treasures at our Open Day!

Grenville Cleave & Colin Cholwill
recently organised a Charity Tractor
Run covering 30 miles starting out
from Hedley Wood Caravan Park..

**The sum of £180 will be forwarded to
Little Harbour Hospice in St. Austell.**



Sheila's Mentions

Happy Birthday to:-

Helen Jones for the 1st November.

Lyndsey Beadle for your special 60th Birthday on 3rd November.

Kimberley Cann for the 10th November

Pauline Latham for the 14th November

Winnie Westlake for the 24th November

Travis Cann for the 7th December

Barry Lucas for the 8th December

Colin Cholwill for the 10th December

Kelvin Davey for the 10th December

**Special 50th Birthday Greetings to Linda for the
12th December**

Ray Wallace for the 19th December.

Sylvia McDougall for the 20th December

Mr Ben Ashton 98 on the 21st December

Katherine Davey for the 24th December

Chris Hitchings also for the 24th December

Tanya Peschke Happy Birthday for Christmas Day.



Our best wishes go to **Jean Hammond** of Kildare.

We would like to welcome **Zac and Karen** to **Melrose Cottage**,

Alan Quilter who now lives at **Waters Edge**,

Derek and Maureen Hollis at **22, The Green**.

Brian and Val Hallaway at **20 The Green**.

Piers, Sarah, Ben, Sam and Matt Hanson to **Newacott House**

We hope they all have a long and happy stay in our village.

Congratulations to **Jamie Hallett**, youngest son of John and Janet Hallett, **and Stacey Pengilley** on the occasion of their engagement. Congratulations also to **Lance Corporal James Hibben** of The Villa, on his recent success as part of a team at a national level Army Cadet Force competition.

Our Congratulations and Best Wishes go to **Katy Bowden**, daughter of Trevor and Sue Bowden and **Jeremy Moore** on the occasion of their wedding on the 1st November. Our best wishes also go to Katy's grandparents **John and Barbara Bowden** for the 27th November when they will be celebrating their 61st Wedding Anniversary.

Congratulations to **Sophie Skilton, James Davey, Stella Thompson, Ella Cholwill and Tyler May** who have recently been elected School Councillors at Bridgerule Primary School.

'HONEYZ FITNESS'

Starting in January 12 week courses....

Monday 9.30 - 10.30

Pilates for all

10.40 - 11.40

Legs, Bums and Tums

Book today to reserve your place

BRIDGERULE VILLAGE HALL

Ring Sally for more details

07737 600424/01840 261644

honeyzfitness@hotmail.co.uk



ZUMBA®
fitness

ALL CLASSES £4

MON: BUDEHAVEN JOHN WARD HALL | 7:30 - 8:30pm

TUES: CENTRAL METHODIST HALL, BUDE | 10:00 - 10:45am

(Low Impact Zumba)

WED: BRIDGERULE HALL | 6:30 - 7:30pm

FRI: POUGHILL HALL | 9:30am - 10:30am

FRI: BUDE BEATS, KIDS STREET DANCE | 4:00 - 5:00pm

(Budehaven, John Ward Hall - please contact for more info)

CONTACT | LISA WOOD FITNESS | 07920 86 77 35

LORRAINE'S FITNESS AND GROUP EXERCISE

Get fit! Have fun! Love life!

Lorraine Gibson 07595831267

-Fitness classes for all

rainebeau2@yahoo.co.uk

-Weight Management

www.facebook.com/lorrainesfitnessclasses

MARHAMCHURCH

Monday 9.00am. Legs, Bums and Tums - 10.00am. Beginner's Mat Pilates.

BUDEHAVEN

Tuesday 6.00pm Body Conditioning - 7.00pm Legs, Bums and Tums.

BRIDGERULE

Wednesdays 9.00am Legs, Bums and Tums

10.00am Beginner's Mat Pilates'

BRIDGERULE VILLAGE HALL OPEN DAY SAT NOVEMBER 8TH 10.00 - 4.00pm

As chairman of Bridgerule Village Hall Ltd I would like to thank everyone who is helping to make the hall refurbishment project such a success. The many generous people who have made donations, the grant funders, the group of enthusiastic volunteers who have put in so many hours of hard work, planning and managing the work. The cleaners, decorators, all the people using the hall and all the many people involved in the day to day maintenance and operation of this important village asset.

We have almost finished work for this year and we would like to invite you along to the hall on **Saturday 8th November from 10am to 4pm** to see what we have been doing and what we still plan to do. Following on from the work we did in the main hall last year, we now have new toilets including an accessible toilet for disabled people. The foyer has been completely refurbished and a new counter and hatch for the Post office has been installed.

There is a new meeting and function room with its own kitchen, ideal for parties and family get togethers. The hall and the new meeting room are available for rental and we have been very careful to keep the rental prices very low to reflect the fact that all the building work has been paid for with donations and grants. Our main objective has been to modernise the hall and ensure that it remains available for the use of the whole village for years to come offering as many services as possible.

Unfortunately we are still waiting for BT to install the phone line before the Post Office can open but we are ready and we will be delivering a leaflet to everyone in the village when we can confirm the opening date. The post box has been moved from the old post office to the hall.

There will be members of the various activities that are taking place in the hall showing off their skills and inviting you to take part and even join their groups if you wish. We'll have a Bridgerule history display, plans of what we hope to do next, members of the charity on hand to answer any questions and listen to any suggestions you have, teas and coffees and bacon rolls in the morning and cream teas in the afternoon. A draw and most boringly - a donation box! But please feel free to ignore it – the whole point of this day is to give us a chance to welcome you and show you how we are getting on.

Cliff Seymour- Smith. Chairman. Bridgerule Village Hall Ltd.

¹¹ **BRIDGERULE BUILT ITS OWN HALL!**

3-Year Project Cost £2561 - 15th June 1957

Built entirely by voluntary labour, Bridgerule Village Hall was officially opened on Saturday. Local masons, carpenters, electricians, plumbers and others have been engaged on the project in their spare time during the past three years, digging and levelling the 3/4 acre site - part of Bridgerule's housing estate—and constructing the hall stage by stage.

Nothing proved beyond the compass of the volunteers, whose ages ranged from 15 to 70 years. The roof trusses of reinforced concrete, each weighing 15cwt, were lowered into position by means of a portable hoist. Then came the asbestos roof, and after that was the kitchen, stage and toilets. Many of the helpers spent their holidays on the task. Others sacrificed overtime so that there should be no hold-up. Now all that remains to be done is the addition of a foyer. Mr Dudley Savage, the BBC organist who declared the building open, described their achievement as "a bit of the pioneering spirit which seems to be sadly lacking these days".

The hall which was built on the site bought by the parish from Holsworthy Rural Council, was first envisaged in 1941, when, said Mr C.J. Andrew, Chairman of the Hall Committee, money was raised during a war savings week and suitably invested. Since then many organisations had raised money for the funds, including the gymkhana committee, the WI, the football club and the Youth Club, while "Revel Week" during the past three years had considerably added to the finances. Thanking all who had helped in the project, Mr Andrew announced that the building was free from debt. Total expenses to date, he said were £2,561 towards which the village had raised £1,681 and the Minister of Education had made a grant of £1,023 leaving a credit balance of £140.

The 96 year old Vicar, Rev. F.H. Kingdom and the Superintendent Methodist Minister Rev. D. Davies, dedicated the building and then the public were admitted to a tea. To celebrate the opening of the Parish Hall a quarter peal of Grandshire Doubles was rung on the bells of St. Bridget's, conducted by Mr. R. Pearce.

The above report was one found in a collection of scrap books which the late Mrs M Dell (Mrs Shirley Youldon's mum) had saved from newspaper cuttings and has loaned to the editor. I'm sure there are more where this one came from.



From Revd Chris Hardwick

By the time this magazine reaches you I expect many of you will already know the news that Sarah and I and our family are to move from the parishes of Pyworthy with Pancrasweek and Bridgerule at the end of the year to begin a new ministry in the parishes of Tavistock, Gulworthy and Brent Tor, where Bishop Robert has appointed me Priest-in-Charge (Vicar designate).

We are all very sad indeed to be leaving so many friends and wonderfully happy times behind us. For

me, it has been a privilege to be your Parish Priest and to share those special and profound moments of life and worship with you - times of happiness and joy, and, of course, times of sadness too. As a family, we have made new friendships and have many good memories of social occasions filled with celebration and laughter - and all this in such a beautiful part of North Devon where we have been made so welcome. I know too how much I have learn from you, and for this I shall always be profoundly grateful. Thank you all so much for the love and kindness you have shown, and for the guidance and support you have given. We will celebrate our fourth Christmas with you before the move takes place. I shall be holding two Crib Services on Christmas Eve, one at Pyworthy at 11.00 am. and the other at Bridgerule at 4.00 pm. These services are for everyone, and all are welcome. Later in the day, Midnight Mass will be held at Pyworthy, 11.15 pm on Christmas Eve, followed by our Christmas Morning Eucharist at Bridgerule, 9.30 am on Christmas Day. My last service in the Benefice will be on Sunday 28th December 2014 at 10.30 am in Pyworthy Church. The service will be followed by a "Bring & Share" lunch in Pyworthy Village Hall and everyone is welcome. I will be licensed in Tavistock Parish Church on the evening of Wednesday, 28th January 2015 and, again, everyone is welcome; please do come if you are able.

Looking to the future, the Revd Christopher Penn from Holsworthy will become the new Parish Priest and I know he is already talking to our Churchwardens and Parochial Church Councils to ensure that everything will go smoothly. Please hold Chris and his family in your prayers as he assumes additional responsibility for Pyworthy, Pancrasweek, and Bridgerule in the New Year. Thank you, once again, for what has been a special time together. My family and I have been richly blessed. We will miss you all.

With my love and prayers - Rev Chris Hardwick.

I would personally like to thank Father Chris for his help when compiling each issue of The Buzz. My best wishes go to you and your family. Editor

Christmas in Bridgerule!!

Would you like to go carol singing in the village??????

We are singing on Wednesday 10th and 17th December around the village raising funds for the Chapel, Church and School

Meet outside the Pub at 6.30pm on 10th and Bus stop at Littlebridge Cross on 17th same time.

Wrap up warm, bring a torch. Carol sheets provided (we may even have the new village choir!!!) Children welcome if accompanied

More information from Chris Hitchings 01288 381129

FUN!



BRIDGERULE VILLAGE HALL

MONTHLY TABLE TOP / CRAFT SALE

SATURDAY NOVEMBER 1ST / SATURDAY DECEMBER 6TH

Amanda's Baking - Sarah's Preserves - Trish's Treasures

Caroline's Bags - Joan's Knit & Stitch - Maureen's Jewellery & Cards

Rose's Cards & Pictures - Fiona's Candles & Christmas Gifts -
Freda's Bits & Bobs

AND OF COURSE THE HALL BIG BRIC A BRAC STALL

We would also be very grateful for your donations to it!

Have a clear out and support our hall at the same time.

Quite recently a study was carried out by over 1360 people aged over 60. Its purpose was to give an insight into the values of the older generation that still holds true today. It was called 'The Fifty Golden Rules' an upbeat reminder of what really matters! The result of the first 25 were these. I wonder what some of The Buzz readers think!

1. Manners cost nothing. 2. Treat others as you wish to be treated.
3. Family comes first. 4. Two wrongs don't make a right.
5. Treasure friendship. 6. Save for a rainy day.
7. Don't judge a book by its cover. 8. Actions speak louder than words.
9. As one door closes, another opens. 10. Laugh as much as possible.
11. All that glitters is not gold. 12. Stay honest and keep your integrity.
13. Keep an open mind. 14. Never be afraid to make mistakes.
15. You don't know what you've got until it's gone.
16. Look after the pennies, the pounds will look after themselves.
17. Only worry about the things you can control.
18. It's what on the inside that counts. 19. Never be afraid to shed a tear.
20. Always have a smile on your face. 21. Out of debt, out of danger.
22. Don't speak with your mouth full. 23. Listen before you speak.
24. Try to see the good in everybody. 25. The best things in life are free.

CHARITY CHRISTMAS LIGHTS



Each year Anthony and Sheila Greenaway of Pyworthy have a display of Christmas lights in their garden. It is always popular and those that come and view them can donate to a nominated charity. This year it is The Longhouse Unit in Holsworthy.

The Christmas lights will be switched on December 6th at 6.30pm.

Children of Pyworthy School will provide entertainment in the Hall on that evening and refreshments will be available.

THE SHORT MAT BOWLS CLUB PROVES¹⁵ HIGHLY POPULAR

Tentatively started on the 23rd of May, the Short Mat Bowls Club has grown from strength to strength. Now in its fifth month there are 20 members. This is quite exceptional support compared with many other communities, where it can take years for membership to reach our level.

Key to our members' enjoyment is the fact that, after they have bowled, they don't have to wait for any length of time before their turn comes round again. This is because we are fortunate in having been able to acquire enough equipment at very reasonable cost to accommodate everyone comfortably. We play on three 45 foot mats on Friday afternoons in the Village Hall.

Why Short Mat Bowls?

The attraction of short mat bowls is that it is a very simple and gentle sport that all age groups and both men and women can enjoy equally all year round - and it makes for a highly social afternoon. It involves bowling 2 to 4 'woods' (bowls) along a 6 foot wide, 45 foot long mat with a view to being closest to the 'jack' (a smaller bowl), while avoiding a small piece of wood in the centre of the mat.

We are pretty near to capacity now but numbers will inevitably change and not everyone plays every week. If you are interested in finding out more about our club, please ring Bill Jackson on 01288 382851 to discuss.



Keep an eye on the village website

www.bridgerule.co.uk

Spotlight on Terry Hibben.....

Terry Hibben was born and grew up in North Kent where he completed his secondary education and two years of engineering college work. He joined the Ministry of Defence as a technician engineer and completed a 4 year apprenticeship and further college study ending up at Admiralty headquarters, Bath. In amongst this Terry had a chance meeting after fixing a tractor on a beach during the summer, resulting in Terry giving this person his CV, as the MOD was going through cutbacks. Nothing more was thought until a job offer came through with a Seismic company – the summer CV had indeed been passed on. Terry started with Horizon Exploration in January 1982 going first to Cuba for 4 months followed by a string of other projects all over the World up until 1996. At this point one of the engineers he met during his first Cuban project contacted Terry to join his new company, WGP, Weston Geo Products to take on a vessel conversion in Corpus Christi, Texas for work in Peru. Terry accepted and changed jobs moving to Kilkhampton.

During all this another ‘chance encounter’ resulted in Terry meeting and eventually marrying Claire. It came about after Terry’s close friend had a serious motorcycle accident putting him in hospital where Claire’s good friend was the Ward Sister. A blind date was organised by both sets of friends – the rest is history – except for getting married in Las Vegas (no, not by Elvis!) and spending their honeymooning scuba diving in the Bay Islands off the coast of Honduras.

The couple returned to live in Kilkhampton with Claire continuing her nursing career at The North Devon District Hospital until James, their eldest son, who now attends Shebbear College, was born.

In 2002 Terry resigned from Westland Geo Products and the family moved to Houston Texas. It was whilst living here that their second son, Alexander, was born. When Alexander was 6 months old the family took a holiday in Florida, driving from Houston to Kissimmee. In the middle of the holiday hurricane Katrina struck removing their route home. The ensuing adventure requiring extra Jerry cans of fuel and a long drive, giving a different end to the vacation. Mileage to get to Florida was 1100; mileage to get home – little over 2000.

The family was in the process of emigrating to the US when members of both Terry’s and Claire family became seriously ill, so a return to the UK was undertaken with Claire returning ahead of Terry buying **The Villa, Bridgerule** where they have lived since 2006.

Edward, their youngest son was born in September 2007. Although Terry had resigned from his American employment he had no job to go to back here in the UK.

Again luck struck when his former employer called and asked if Terry knew of any engineers available to take on a project for BP – Terry said ‘how about me?’ and so he resumed work for WGP. In 2012 Terry was made a Director of the company holding the position of Chief Technical Officer.

Projects and work undertaken by WGP is varied and worldwide. Recently WGP designed and manufactured upgrades to a small vessel that already existed on Lake Tanganyika. This meant everything you would need had to be purchased and shipped down to Africa – literally everything, right down to soap and toilet paper!. The vessel would be pulled out of the water on a slipway built before the First World War – the same slipway that was used to build the Liemba – the ship the Film ‘Africa Queen’ was based on. Unfortunately the political climate has put this project on hold.

A significant project won and current being run by WGP is for Statoil, the Norwegian State oil company. This is the most recent in a series of Life of field systems which improves the oil recovery from a reservoir. WGP designed, built and now run a portable source system for Statoil with a build cost in excess of \$20 million and a project life for WGP of 7-9 years. All this work and travel puts a serious load onto the people who work for Terry – and himself. All engineering systems and modifications to vessel have to comply with industry and international standards. WGP is ISO 900, 14000 and 18000 compliant running a certified QHSSE system. The additions ‘Q’ and ‘S’ you see on top of the normal ‘HSE’ is quality and Safety – the latter is necessary when travelling to or working in different countries. For example in Africa Terry would take a sharps kit – your own sterilised needles and medical needs, mosquito nets, and a personal emergency beacon. Anyone travelling would receive a ‘travel pack’ with all information and emergency contact specific to that country.

When Terry is not working he enjoys rifle shooting. In 1999 he shot for Great Britain in the World Championships in the Long Range Historic category. To take part Terry and his team members travelled to the State of Virginia in America. His shooting gained him top of the British contingent in the individual medals and the team were placed 3rd.

Terry now shoots with the Tamar Rangers Rifle Club with ranges at Millpool on Bodmin Moor or Parracombe on Exmoor. He also took part in the 2011 and 2012 European Police Marksmen Championships which was held at Holosov in the Czech Republic. Terry being allowed to become a ‘temporary member’ of the British Armed Police to compete! Deer stalking and when requested vermin control, completes his shooting pursuits.

I thank Terry for sharing a snapshot of his interesting career with me and wish him and his family well for the future.

SERVICES AT ST. BRIDGET'S FOR NOVEMBER/DECEMBER 2014

2nd November	11.00	Eucharist
9th November	11.00am	Remembering Sunday Eucharist with wreath laying
16th November	11.00am	Communion by extension
23rd November	11.00am	Eucharist
30th November	10.30am	Benefice Eucharist
7th December	11.00am	Eucharist
14th December	11.00am	Christingle
21st December	11.00am	Eucharist
	6.30pm	Bridgerule Chapel - Carol Service
24th December	4.00pm	Crib Service
	11.15pm	Midnight Mass
25th December	9.30am	Christmas Eucharist

NEIGHBOURHOODS WATCHINGS BY SERGEI

John had a brief chat with a farmer the other night. Something is attacking and killing his sheep so he's off back to Cornwall. (he could shoot to kill dogs found molesting his sheep).

John thought he may have been getting a "rave" organised. There was something of the sort, nearby, before the rains came. By now anyone wishing to report/complain about this will have done so—to The Environmental Health Office— which, in Torridge, can be contacted on 01237 428810 or 01237 423700 out of hours.

Did you get a snap visit from energy saving solutions? Did they help? All he left me was a "sorry we missed you today" card with his mobile number (and Plymouth number) I've heard nothing since! Apparently my property is in a 'CSC0' Area!!!

Anyway, back to the visual scams - "We have a member of your family in custody for fraud". Would that make you give your bank details, pin numbers etc. to someone you don't know who has just phoned you up—hoping for a "sucker"? I do hope not. Keep yours to yourself. Finally make sure you hear a dialling tone before you use your phone—at any time.

Sergei! No really **John McDougall 01288 381237**

CHRISTOPHER AND RACHEL HALE



Early readers of The Buzz Newsletter may recall this picture of Christopher and Rachel at Heathrow Airport. It was taken on the 17th January 2011 when they were about to begin their holiday of a lifetime! Christopher and Rachel let us travel along with them (so to speak) taking us to countries such as America, Tokyo, Canada Australia and New Zealand to name but a few. Each edition of The Buzz for the whole of 2011 the couple kindly described very fully and provided photographs of places they had just visited. Christopher is the youngest son of David and Vivienne Hale of Lodgeworthy and on the 25th October Christopher and Rachel were married in Cheltenham. **On behalf of The Buzz may I congratulate them and give them our best wishes for the future.**

A Traffic Camera....

A man was driving when he saw the flash of a traffic camera. He figured that his picture had been taken for exceeding the limit, even though he knew that he was not speeding. Just to be sure, he went around the block and passed the same spot, driving even more slowly, but again the camera flashed.

Now he began to think that this was quite funny, so he drove even slower as he passed the area again, but the traffic camera again flashed. He tried a fourth time with the same result. He did this a fifth time and was now laughing when the camera flashed as he rolled past this time at a snails pace.

Two weeks later he got five fixed tickets in the post for Driving without a seat belt.

THE REAL GREAT BRITISH BAKE OFF:

HOW TO MAKE A TRENCH CAKE

Following the tasting of some Trench Cake at our World War 1 Event as requested we print below the recipe You can try.

Ingredients

- | | |
|-----------------------------|-----------------------|
| • 225g/8oz. plain flour | 2 teaspoons cocoa |
| • 2 teaspoons cocoa | 110g/4 ozs margarine |
| • 1/2 teaspoon baking soda | 1 teaspoon of vinegar |
| • 1/4 pint of milk | 3ozs brown sugar |
| • 75g/3oz. cleaned currants | Nutmeg |
| • Grated lemon rind | Ginger |

Method

Grease a cake tin. Rub margarine into the flour in a basin. Add the dry ingredients. Mix well. Add the soda dissolved in vinegar and milk. Beat well. Turn into the tin. Bake in a moderate oven for about two hours.



MACMILLAN CANCER SUPPORT COFFEE MORNING



Victor & Marilyn Pickett together with Lyndsey Beadle organised a Coffee Morning in aid of Macmillan Cancer Support in Bridgerule Village Hall on 25th September 2014. It was very well attended and raised the magnificent sum of £203.00.

PVCu WINDOWS & DOORS CONSERVATORIES KITCHENS & BATHROOMS
GLASS BALUSTRADES BUILDING SUPPLIES

Kings Hill Industrial Estate, Bude EX23 8QN

www.kjbromell.co.uk

01288 357020

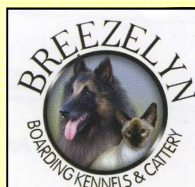
- we manufacture, supply and fit double glazed PVCu windows, doors and custom designed conservatories
- we design and supply beautiful, functional kitchens, bathrooms and wet rooms to help you create your ideal home

Alan & Julie Pike

Breezelyn Kennels

Titson Nr. Bude Cornwall EX230HH

- Heated Kennels and Cat Chalets
- Individual Runs
- Large Play Runs
- Grooming Service
- Doggy Day Care



Tel: +44 (0) 01288 361680

email: info@breezelyn.co.uk

web: www.breezelyn.co.uk

D S Painting & Decorating

*Quality Interior & Exterior Work.
Domestic And Commercial.
Fully Insured And Highly
Recommended.*

All Aspects Of Work Undertaken.
Phone dan on
07712436690
dansims48@hotmail.co.uk



J J LOGS & KINDLING

TRANSIT TIPPER LOADS

- Hard Wood • Soft Wood
- Full Loads • Half Loads

Cut and split to your requirements
FREE net of kindling with every load
PHONE for prices
07765091886

BRIDGERULE METHODIST CHAPEL

SERVICES FOR NOVEMBER/DECEMBER 2014

2nd November	Mr P Craig	11.00am
9th November	To be Arranged	11.00am
16th November	Mr. T. Sillifant	11.00am
23rd November	Mr. J. Guy	11.00am
30th November	Rev. J. Wilson	11.00am Sacrament

+++++

7th December	Mr. R Down	11.00am
14th December	Mr. C. Drew	11.00am
21st December	Rev. J. Henry	United Carol Service with St Bridget's 6.30pm
28th December	No Service	



On Sunday October 5th a Joint Ecumenical Harvest Celebration was held at Bridgerule Methodist Chapel with many members from both the Chapel and St. Bridget's Church attending the service, led by Mr John Uglow. William and Phoebe Lucas read their Harvest Poems during the service which was concluded by prayers led by Rev. Chris Hardwick.

On Monday October 6th a short service of Harvest Celebration was led by Mr Mark Shears, prior to a supper and sale of produce by Mr Colin Cholwill. £498.15 was the amount raised over the weekend for chapel funds. Grateful thanks is expressed to everyone who supported it in anyway.

23
FIRST USERS OF THE NEW HALL MEETING ROOM



**Chairman
Ken James**

**Parish Clerk
Rachel Stratton**

**and members of
the Parish Council**

**Members of the
Art & Craft Group
making Christmas
Crafts at one of their
recent meetings**



BRIDGERULE INTERNATIONAL FOLK DANCE GROUP

meet at
BRIDGERULE VILLAGE HALL
every
THURSDAY BETWEEN 2.00 AND 4.30 P.M.
£3.00 (including refreshments)

International Folk Dances are gentle(low impact) dances with a wide variety of tempos and styles. Previous dance experience is not necessary. You do not need a partner. You will need soft shoes, preferably with a low heel. (e.g. Trainers,etc.)

If you would like to join us for an afternoon of dance and fun, please come along, you will be very welcome.

More information please contact Mike Allison 01288 381764

*Under new
Management*

EST



1937

**HOLSWORTHY
GOLF CLUB**

OPEN TO ALL

Sunday Carvery

Every Sunday 12:30pm - 2:30pm

Only £7.95 per person

Choice of 2 meats, yorkshire puddings,
stuffing & selection of 4 vegetables.

Plus homemade sweets.

Cheese & biscuits also available

*Great deals for
societies*

*Reduced prices
for membership
& green fees*

*5 for £25 taster golf
lessons throughout
April & May*

*Breakfasts & lunches · Regular fun nights
& events · Functions · Pool table & darts*

01409 253177

www.holsworthygolfclub.co.uk

Function Room available for hire day or evenings

*Christenings, Birthday parties, Club dinners, Works parties, Funeral teas,
Meetings (day or evening), Coffee mornings*

south west
**BOUNCY
CASTLES**

**ADULT AND KIDS
BOUNCY CASTLES**

**SUMO WRESTLING SUITS
BUNGEE CHALLENGE**

**GARDEN GAMES
INFLATABLE SLIDES
MARQUEE HIRE**



JON DAVIS 07779782716

SOUTHWEST BOUNCY CASTLES.CO.UK

Orchard's Digital Installations

**For all your TV and Satellite Installation
and Servicing Needs**

AVAILABLE 7 DAYS A WEEK

Telephone 01288 382935 / 07780 783956

SKY * FREEVIEW * FREESAT

Southlands Court

offers

*

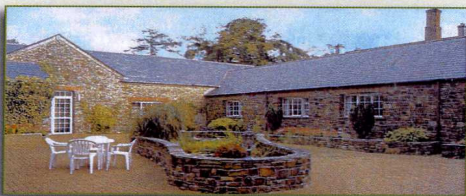
full time care,
respite/holiday care
and day care

*

Peacefully

Situated

SOUTHLANDS COURT RESIDENTIAL HOME



Bridgerule, Holsworthy, Devon EX22 7EW

Tel: Manager: 01288 381631 Tel: Residents: 01288 381642

MASTERS MINIATURES

Gary & Heidi Masters

Makers of high quality period miniature furniture

4 Railway Cottages Bridgerule Holsworthy Devon EX22 7EB

www.mastersminiatures.com

Tel: 01288 381676

e-mail: Heidi@masterminiatures.co.uk

BUDE EYE CENTRE

Tel: 01288 350041 Fax: 01288 350140

www.budeeyecentre.co.uk info@budeeyecentre.co.uk

- Private & NHS Eye Examinations
- Local, Professional and Friendly
- New Hearing Service available with half price hearing aid batteries
- Contact Lens Consultation
- Large selection of Spectacle Frames
- Same Day Service Available
- competitively priced Repair service an
- Wheelchair/disabled access.



www.psgremovals.co.uk

PSG
REMOVALS
Storage & Light Haulage
(Formerly The Van Man Removals)

Contact Us:
FREE QUOTATIONS

Tel: 01288 488 531
Mobile: 07581 686 978

JON PIPER

PLUMBING AND HEATING

Bathrooms, Tiling & Leadwork, Boiler Serving, Central Heating, OFTEC Registered, City & Guilds Qualified

DISABILITY ADAPTATION SPECIALIST

Tel: 01288 381536

Mobile: 07825698529

JEWELLS CROSS SERVICE STATION AND RED POST GARAGE

Servicing - MOT - Testing - Repairs - Bodywork Breakdown Recovery -
Comprehensive Accessory Shops

Car Wash - Self Service Petrol & Diesel at Jewells Cross

Self Service Gas at Red Post

Jewells Cross Tel: 01288 381770 Red Post Work Shop Tel: 01288 381 340

MOTs Tel: 01288 381306

CN Holistics ~ Pyworthy

Specialising in Nutrition and Herbal medicine, massage and meditation

Professional training and workshops for leisure.

Raw Chocolate products and affordable luxury facial products

www.cnholistics.com

01288 381201 or 07810 645941

SHORT & ABBOTT LTD

Mill Road, Bridgerule,
Holsworthy, Devon
EX22 7EL

Tel: 01288 381485

Fax: 01288 381486

gary@shortandabbott.fsnet.co.uk

www.shortandabbott.co.uk

Principal & Sales: Colin Short
Service & Parts: Gary Abbott



GARY THE HANDYMAN



**FOR ALL THE JOBS
THAT NEVER GET DONE!**
LET ME HELP ON D.I.Y. DISASTERS!
BASIC ELECTRICAL REPLACEMENTS
PLUMBING
WOODWORK
PAINTING
FLATPACKS
BLINDS
CURTAINS
WASHING MACHINES INSTALLED
GARDENING
CLEANING & LOTS MORE
LOCAL TO BUDE & HOLSWORTHY
VERY CHEAP RATES FREE QUOTES
CALL GARY ON:
01288 381658 / 07766 806879

DIAMOND

THE CUTTING EDGE IN

**PROFESSIONAL
CARPET, CURTAIN
& UPHOLSTERY CLEANING**

Domestic & Commercial

- Deep Hot Water Extraction Cleaning
 - Deodorising Treatments
 - Dust Mite Removal
 - Leather Cleaning
 - Stain Protection
 - Stain Removal
- Other treatment
also available

OUR PRICES ARE HARDER THAN A
DIAMOND TO BEAT

Call us now for a
FREE ESTIMATE

Call Mike on Holsworthy
01409 254816 or 07855 275088

Bridgerule Early Years
A Pre-school for the Community

Day care for 2-5 Year Olds

Childcare vouchers accepted

**Government funded places for 3 year olds
available (and 2 years olds if criteria met)**

**Stay and Play on Mondays from
1.30-3.00 for 0-5 year olds**

For more information please call on
07879 955874 or email on bradfordpsn@aol.com

**Or visit our website on
www.bridgeruleearlyyears.org.uk**

Humphrey

Pullar

PROFESSIONAL

CHIMNEY SWEEP

NACS & HETAS

- Full Brush and Vac Service
- Birds Nests Removed
- Smoke Testing
- Appliance Servicing
- Pots, Cows and Guards Fitted



Donset Library Service

Mobile library service
On the move...



Donset Library Service

MOBILE LIBRARY

VISITS BRIDGERULE

Village Hall

2.00pm

Uplands

2.50pm

NOVEMBER 19TH

DECEMBER 17TH



**T: 01409
253 533**

2 Kingfisher Units
Holsworthy Ind' Est'
Holsworthy, Devon EX22 6HL

WWW.RENEWSW.CO.UK



**QUALITY WINDOWS, DOORS
CONSERVATORIES
SOLAR PV & ROOFLINE**

Your Local Renewable Energy Specialists



Julia Trayford
Holistic therapist
1 Bailey Gardens
Bridgerule
Holsworthy Devon

01288 381680 or 07990554370

Julia's Holistic Treatments
for mind body and soul



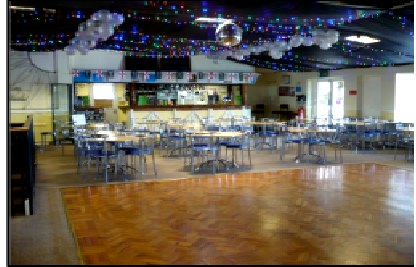
Hedley Wood Caravan & Camping Park

Bridgerule, Holsworthy, Devon, EX22 7ED

Email: alan@hedleywood.co.uk, Tel: 01288 381404

www.hedleywood.co.uk

- Licensed Bar & Catering for all events; birthdays, anniversaries & weddings!
- Camping pitches and static caravan hire
- Open for Bar Meals & Drinks (High season)
- Sunday Carvery (High season — please ring to book)



BESPOKE PICTURE FRAMING & LARGE FORMAT (GICLE'E) DIGITAL

PRINTING

John Williams

37 Southfields, Bridgerule. EX22 7DX



01288 381702

E-Mail: frames.andthings@btconnect.com

By Appointment Only



THE BRIDGE INN - 01288 381316

***Sunday Night is Quiz Night
Come and join us in the pub***

New teams always welcome to join our happy hub.

Eyes & ears open at 8.30 ready to start

You're welcome to come along and take part.

***Just for fun Irish Bingo follows later
for all ages this fun caters.***

***Money prizes for the winners and maltesers for the losers
So everyones a grinner!***

21st December Christmas Quiz—Dress a Table

24th December - Christmas Carols

31st December New Years Eve Disco

Jammin Nights - Mondays 8.00pm

Food Available Thursday and Friday Evenings

Those who have kindly agreed to sponsor The Buzz are:-

Mr and Mrs. McDougall - Uplands	Darren & Amanda Linney - Hollybank
P.J. Bobcat Hire— Mr C Cholwill	Robert & Julie Honey - Higher Beer
St Bridget's Church Bridgerule	John & Jean Hammond—Kildare
Mr and Mrs C Hitchings - Meadows Barn	Alan & Rosie Beat—The Mill
Mr and Mrs T. Brock—The Green	Mr and Mrs Field - 10 Southfields
Mr & Mrs Steel - 8 Southfields.	Mr and Mrs Hodges - Southfields
Cliff and Liz Seymour-Smith -Glencarne	Mr & Mrs Allison - Canna Park
Mr and Mrs J Gardener - Buttsbeer Farm	Mr & Mrs. F. Bond -The Green
Mr and Mrs G Cleave - Garden Ridge	Mr and Mrs. J. Medland - Rosebank
Stephen and Sandie - Southfields	Linda Goodman—1 Bridge Park
Mrs. Sybil Prouse - Rydon	Mrs. C. Gee - Southfields
Mr and Mrs Heal - Ashleigh	Bill & Margaret Eastcott-Littlebridge
Steve and Jo South -Brensham House	Mr and Mrs N. Rimmer - Silverstone
Carol & Ian Baker -Eastlake Lewdown	Michael & Alison Timms -Glebe House
Mr & Mrs M Yeo - Holsworthy	Paul & Stacey Cholwill -1 Littlebridge
Mr. & Mrs. Pickett— Southfields.	Mr Jim Bearham - Woodlands
Mr. & Mrs. Keen -Littlebridge Meadows	Mr & Mrs. B. Williams - Owlies
Gary and Shirley Abbott - Carn Venn	Ray & Audrey Bewes -The Green
Skipp Family - Furze Farm	Michelle and Paul Sanders - Rimmersleigh
Mr & Mrs. D. Hale -Lodgeworthy	Ron & Gwyneth Cameron - Southfields
Mr & Mrs. J Bowden - St Catherines	Roger & Cindy Neep -Tamar House
Mr and Mrs. A. Jones - Holladene	Mrs. Shirley Youldon - Knowle Cottage
Steven & Ann Youldon - Knowle	Mr & Mrs M. Lucas -Little Bridge Meadows
Malcolm Newton—Southfields	Ron & Marion Abbott - 2 Bridge Park
Paul & Jane Woodward - Morwenna	Mr. & Mrs. J. Wickett—Munks
Alec & Pat Johnston - Southfields	Colin and Margaret Short—Col Marvin
Mrs Karen Gliddon - Holsworthy	Brian & Lyndsey Beadle - Littlebridge
Trevor & Sue Bowden -Churchtown	Mr & Mrs Green—Moorside
Keith & Sheila Descombe -Hedley Wood	Dave & Maggie - Hedley Wood
Terry & Julie Reddcliffe -Larapinta	Michael & Linda Moore -The Green
Mr & Mrs B. Ashton - Southlands	Mr & Mrs D. Martyn - Borough Farm
Les & Betty Slade - The Green	Kevin & Susan Norton - The Village
Darren & Tasha Stevens - Sanctuary	Doug & Sue Genini - Inversus
Highfield Caravan & Camping Site	Bill & Lynn Keeley - Canada
Mrs M. Bird - Kents View	Mrs Alison Tomlin—4 Bridge Park
Mick & Jill Friendship -Tavistock	Pete & Angela North - Great Beer
Colin & Fiona O'Reilly - Southfields	Christine & Bill Jackson -Littlebridge Meadows
Mr & Mrs Tim Honey - Grove Farm	Les & Annette - Remnant Shop Bude
Barry & Joan Marshall - Littlebridge Meadows	Mr & Mrs L Haydon - East Park
Victor & Janet Bickle - Stratton	Mrs K Farkus - Green Pastures
Sam Beer - Tatson	Mrs Kathy Elliott - Little Platt
Miss P Glover - Lower Dux	C & L Clocks— Glencarne
Mr A Rowland Bude	Dave & Karen Thomas - The Forge
Mr Eunice Furmage - Holsworthy	Mr & Mrs D J Best - Old Mill View
Miss Georgina Tomlin - The Village	Mrs J. Vinnicombe - Holsworthy
Rob & Nina Jones - Littlebridge Meadows	Rick & Sarah Hallett—Littlebridge Meadows

Those who do not wished to be named

NEATE FEET



For all your foot health needs

Professional foot care in the comfort of your own home.

- *Painful Callus Reduced
- *Toenail Clipping
- *Ingrowing Toenails
- *Painful Corns Removed
- *Paddings & Dressings
- *Verrucae Treatment
- *Reflexology

Claire & Simon Neate DIPC FHP

Qualified foot health practitioners

07968232344 / 07870508867



Bringing the farmers market to you

SPECIAL OFFERS AVAILABLE

Suppliers of Meat, Poultry, Fruit, Vegetables, Bread, and lots more.

**To find out more or to place an Order
Visit www.westcountryfoodbox.co.uk**

or Telephone: 01288 358070



FLOWTECH
Heating Services

*Oil and Gas Heating,
Plumbing and Renewables*

- Oil, Gas & LPG Work
- General Plumbing
- Heating Installations
- Boiler Servicing & Repairs
- Boiler Installation
- Heat Pumps & Biomass



01288 381530



07766 258431

www.flowtechheating.co.uk



Premier
Amazing Value Locally

**Whitstone
Village Stores**
01288 341444



**We Are Open Mon-Sat 7am until 8pm
Sunday 8am - 7pm**

Don't forget, Our Post Office is now OPEN THE SAME HOURS at the shop

Customer Update June 2014

After a long winter it's great to finally see some sunshine! At Whitstone Stores we have been busy reviewing our range, bringing in lots of great new LOCAL & fine foods, making sure we have everything you need for all those BBQ's as well as great value on your everyday essentials. We have been asking customers on our facebook page (just search Whitstone village Stores) if there is anything else you would like us to stock and even if we should stay open later in the summer? Why not have a look and join in the conversation.

This Month we have 2 new in store services for you. Carpet Cleaner rental to compliment our busy dry cleaning agency and a new self-service Photocopier, just ask any member of the team for more details. We look forward to seeing you soon & remember, if there is anything else we can do for you please just ask, we are only too happy to help.

**Carpet and
Upholstery
Cleaner
RENTAL**

Weekend Hire Only
£29.99
Thursday to Monday



Photocopying
Great news we now have a brand new photocopier A3 / A4 available on a self service basis
10p each A4
20p each A3



Dry Cleaning

Copy & Fax

Hot Pasties

Simple Payments

Mobile Top-ups

**Electricity Key
Charging**

TV Licensing

Internet & Wi Fi

Free To Use ATM

Coffee To Go

National Lottery



For all of our latest news offers and more coupons visit us at
[@whitstonestores](http://facebook.com/whitstonevillagestores)

WHAT'S ON DIARY

Regular Clubs /Classes held in our Village hall where you would be made very welcome:

Mondays 11.30—12.30pm **Spirals** - with Sally - (see advert)

Tuesdays 10.30 - 12.00 **Village Coffee Club**— Alec & Pat 381 054

From 2.00pm **Table Tennis** - Contact Jill Knightly 01409 254349

6.00 - 8.00pm **Revitalise** - David on 07715560912

Wednesdays 9.00—11.00am **Legs, Bums & Tums etc.** with Lorraine -
(see advert)

2.00—4.00pm **Art & Craft** - Contact Lyndsey 381 117

6.30—7.30pm **Zumba** - Lisa - (see advert)

Thursdays From 2.00pm **International Dance** - Mike - (see advert)

Fridays From 2.00pm **Short Mat Bowls** - Bill - 382 851

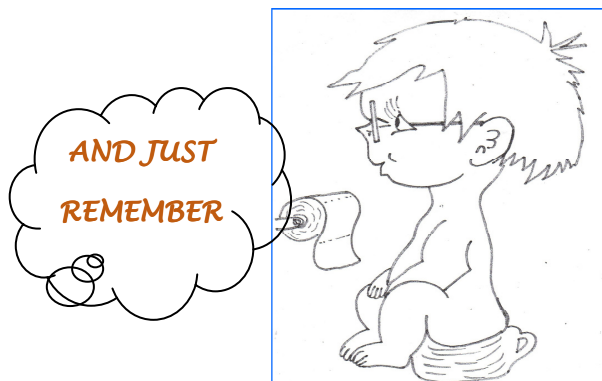
EVENTS GOING ON IN OUR VILLAGE FOR NOVEMBER/DECEMBER

Saturday November 8th - Village Hall Open Day 10.00am—4.00pm
See Poster

Sunday 7th December - Christmas Concert Methodist Chapel - *See Advert*

Saturday December 12th - Annual Christmas Concert - Hall - *See Advert*

Wednesday 10 & 17th December - Carol Singing - *See Advert*



**No job is finished until
the Paperwork is done!!**