



If you've a slightly - podgy bum
And found that dieting's - NOT much fun
Then trampolining's - just the thing
It's flying high - without the wings.

You'll be bouncing to a groovy beat
An energetic - weekly - treat
Zooming off the floor and walls -
It happens at - our village hall.

THERE
GOES THE
NEW HALL
ROOF !

THE BUZZ

SEPTEMBER/OCTOBER 2019

ISSUE 58



Dear Buzz Readers,

Another very successful Revel Week has just taken place. It's a busy week but a very rewarding and special one for our village. I would like to thank everyone who helped in the preparation of it and throughout the events.

The Revel Committee has not completed its balance sheet yet but the following will give you an idea of how successful some the events were.

Crowning of Queen - Hall	£430.00 Profit
Wine and Wisdom - Chapel	£475.00 Profit
Ramble F.O.B.S.	£900.00 Profit
Bingo Football Club	£850.00 Profit

Thank you to our new Queen Ella and to Phoebe, Harry, Lenny and Erin who supported her. Also a big thank you to their families for helping to make it a special time for them and for playing their part in our village tradition.

Sheila Cholwill Editor

E-mail: sheilacholwill@btinternet.com

Telephone: 01288 381350



DIDN'T THEY DO WELL!

Ella, Phoebe, Harry, Lenny and Erin have represented our village at Hartland, Bude and Bradworthy Carnivals since our own carnival and the judges have awarded them

1st each time!

CAN YOU HELP LIZ?

Hi Sheila.

We are looking for about 24 grape pickers for a day in the first week of October. We wouldn't know exactly which date until nearer the time as it all depends on the sugars in the fruit to determine when to pick. The last two years it has been about the 5th October. If we get enough people we should be able to do it all in one day. I wondered if you had any friends/acquaintances from the Bridgerule Village Hall groups that might be interested. It would include a homemade lunch plus a glass of wine for their efforts.

Liz Dickson
Pale Park
Tackbear Manor
Marhamchurch
Bude
Cornwall
EX23 0HH



Tel: 01288 381393

mob: 07516 614190



TRADERS £5 A TABLE CAN SET UP FROM 12.00 NOON

BUYERS FROM 1.30PM

LIGHT REFRESHMENTS, TEAS AND COFFEE AVAILABLE

7th SEPTEMBER /5TH OCTOBER

Donations to Table Top would be greatly received

All proceeds to help maintain Village Hall

Contact Christine on 01288 381033 or Sheila 01288 381350

BRIDGERULE COFFEE CLUB

The Coffee Club recently travelled to Falmouth for their Monthly Trip.

Here everyone spent time aboard the Princessa and took a trip up the picturesque Helford River.

The boat came very close to several jelly fish.



Truro was the next port of call for a late lunch and some retail therapy before returning home.

BRIDGERULE METHODIST CHAPEL PREACHING APPOINTMENTS 11.00am

1st September E Boundy
8th September J. Guy
15th September St. Bridget's
22nd September M. Hodges
29th September V. Bickle

Harvest Festival

6th October Rev. H. Curnow
7th October Rev. N. Street
7.15pm Followed by Sale
and Supper
13th October J. Wilson Sac
20th October J. Hawkins
27th October Mrs. J. Orchard

**OUR VILLAGE HALL'S
NEW ROOF AND CANOPY GET THE THUMBS UP FROM RESIDENTS!**

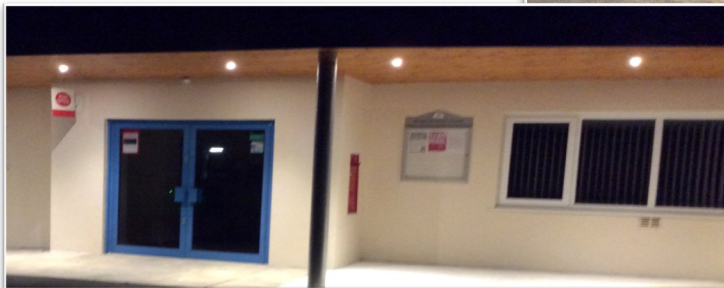


Donnie Walter from Bradworthy and his workmen have been involved in the complete refurbishment of the hall since 2013.

The new roof was the biggest undertaking and the final part of our refurbishment jigsaw.

The hall committee are extremely grateful to Donnie, Matt, Clarkie and Lee on their workmanship and the manner in which the work has been carried out.

2019 has seen the Committee of Bridgerule Village Hall rewarded by a Big Lottery Fund Grant of £63466 to replace the original asbestos hall roof and erect a canopy at the front of the hall.



ST. BRIDGET'S CHURCH

SERVICES - 11.15am

1st September	Morning Prayer
8th September	Morning Prayer
15th September	Sung Harvest Eucharist - Joint Service with Methodist Chapel
22nd September	Morning Worship
6th October	Sung Eucharist
13th October	Morning Prayer
20th October	Sung Eucharist
27th October	Morning Worship



ANNUAL CHRISTMAS CRAFT FAIR

HEDLEY WOOD CARAVAN PARK

Saturday 2nd and Sunday 3rd November

10.00am—4.00pm

Free Entry

Any profits to Launceston Memory Café



WINNING GROUP GYPSOPHELIA

AND FANCY DRESS ENTRIES RUBY AND SOLOMON AT BRIDGERULE CARNIVAL



**Homoeopathy
at Wellie Level**

Established
2001

Award Winning Farm Homeopathy Course

Can you afford NOT to take this course?

'Since taking the HAWL course, we have halved our vet & med bill. But the benefits are beyond just cost, the course has empowered us too - we're nipping things in the bud before symptoms develop into a disease that the vet can recognise'.

(Sally Wood, Carmarthenshire)



HAWL has been a Farmers Weekly 'Farm Advisor of the Year' finalist and has been awarded Best Teaching Course by the Society of Homeopaths.

Find out more or BOOK online at hawl.co.uk

MORE CARNIVAL PHOTOS

PROUD GRANDMA MOMENT!

WINNER OF CLASSIC CAR CLASS 2019



BACK TO THEE 80'S

BRAUND FAMILY AND FRIENDS



Hackers can track you via Bluetooth

Researchers at Boston University have identified a major flaw in Apple, Microsoft & Fitbit Bluetooth devices which allows hackers to track and monitor your activity.



The flaw affects users of iOS devices like iPads, iPhone's Apple watches as well as Microsoft Surface tablets, laptops and wearables. FitBits are among the most vulnerable.

Devices running on iOS, macOS and Windows 10 transmit advertising and custom data. This advertising can be used to identify your device, it means data doesn't need to be hacked as your information can simply be harvested through the backdoor from the systems caches using "cookie" type programs.

Android devices are not able to be tracked due to a difference in the way the devices communicate, but Apple, Microsoft and especially FitBit devices are all susceptible.

The only way to ensure your data is not harvested or your system tracked is to switch off the Bluetooth signal off when not in use and only use it for short periods of time. However, this does not apply to smart device's like FitBits or SmartPens which cannot be switched off.

Windows 10 Upgrade to Version 1903

Some computers are malfunctioning from the recent upgrade in Windows 10, (version 1903 released in May this year) older programmes may not work as they once did, some may need new drivers installed, others need to have the program compatibility changed. Annoyingly a few older systems have lost sound or webcam functions as old drivers become incompatible with the new OS. However, most programs should work without problem.



**For free telephone advice on all computer issues
Contact Nofix Nofee Computer Services tel: 01288 381061**

LAST NIGHT OF THE PROMS

with

BUDE CONCERT ORCHESTRA

Includes Proms favourites and Songs and Music from World War 1.

Singing to be led by Bassline, Elizabeth Hobbs and Paula Quigley.

Audience invited to join in with the well-known choruses.

DATE: Saturday 28th September 2019 at 7.30pm

Venue: Parkhouse Centre Bude

Tickets £6 on the door (children £2)

Light Refreshments

Conductor: Barry Carrington Moule



Creative Church
for all the family, organised by St Bridget's Church

Wednesdays 4-5pm
during term time at
Bridgerule Primary School

All welcome

Story-time
Arts and
Crafts
Games
Prayer

More Information from
Gemma Furse: gemma.star82@hotmail.co.uk
or Mother Elizabeth elizabethmaburke@jobud.com

ALL CHILDREN TO BE ACCOMPANIED BY A RESPONSIBLE ADULT



Bridgerule Early Years
A Pre-school for the Community

Term Time Day Care for 2-5 Year Olds

Tax Free Childcare & other vouchers accepted

Funded places for 3 year olds available (and 30 hours extended entitlement & 2 year old funding, if criteria met)

FOUNDATION STAGE UNIT
OPEN ALL WEEK

Monday to Friday 9am-3pm

For more information,
please call on:
Bridgerule Primary School 01288 381366
Or email on admin@bridgerule.devon.sch.uk





**JOHN AND SYLVIA
McDOUGALL
CELEBRATE THEIR GOLDEN WEDDING**

On 26th July John and Sylvia McDougall celebrated their Golden Wedding Anniversary.

They were married at St. Mary's Church Kempsey.

Back in March 1966 John was beginning his new job at the Collector of Taxes Office. As John walked into the typists office on his first day of work he noticed

a young lady and thought "she looks nice" and as we say the rest is history.

John and Sylvia moved to Bridgerule from Kidderminster on 6th April 2001.

Their 2 sons Malcolm and Robbie still live in Kidderminster. Sylvia is a very keen gardener and John enjoys reading.

The couple enjoyed celebrating their golden wedding anniversary with their eldest son, Malcolm at Rosemoor with a cream tea.

MOBILE LIBRARY

Village Hall 2.00pm

Uplands 2.50pm

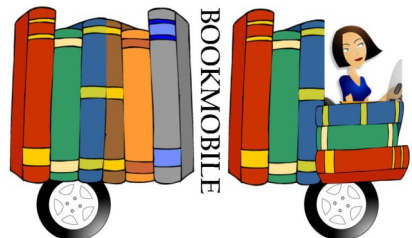
NEXT VISIT

4th September

2nd October

30th October

VISITS BRIDGERULE



NEIGHBOURHOOD WATCH NOTES

Do you get phone calls like this? There is no introduction just a recorded female voice saying "£600 has been taken from your VISA account, press one to speak to our representative".

What ! Press nothing. Just put the phone down. No number comes up on the 1471 system so you can not use the 1572 facility to send all future calls from that number to the junk voice mail.

We checked anyway. No loss incurred. Never press any thing they ask. Just replace the handset.

Many drivers now have dash-cams. With luck you may never need to view the contents of the SD card in them. However, if you do record an event suitable for police action you may now pass on the recording to the police through operation snap. Use "www.dc.police.uk/opsnap". There are lots of terms and conditions to make sure that you have got what they need, but it is a little something that we can do now.

It was mentioned to me earlier that drivers with keyless cars should be careful using their fob to activate the vehicle systems. After all, no key - only technology and radio waves. I suppose it's a bit like someone zapping your contactless cards. You can't see what's happening and only know afterwards to your detriment.

On Monday on channel 4 is "Call the cops" from Devon and Cornwall Police. On at 9pm throughout September.

If it can go as a filler. It starts next Monday but 8 episodes so I hope it's all D&C police. The alert didn't say either way.

As always - "let's be careful out there" (Hill Street Blues).
Not quite - "keep 'em peeled", but "don't have nightmares".

John McDougall
Co-ordinator Bridgerule
01288 381237





**Channel four
Television programme
'Four in a bed'**

**Comes to
Glebe House**

A few years back, my parents, Nick & Polly came up with one of their crazy ideas. They were a bit upset that I had moved out of home and that we could only see each other on high days and holidays; they approached me with an idea, to sell up and move to the West Country to run an accommodation complex as a family business, where we could all work and live together. At the time it seemed like a crazy idea, but the more we thought about it, (and the more wine we drank!) the better the idea seemed, and before we knew it we were looking online at different accommodation complexes. After a few weeks of looking (usually at silly hours in the morning because we couldn't stop thinking about it), we came across, amongst many others, Glebe House Cottages and arranged a viewing. We absolutely loved it, the scenery is spectacular, it's very near to the coast and situated in a really friendly community. It all seemed like a bit of a pipe dream, but things became very real when the previous owners, Alison and Michael Timms said they were looking to move as soon as possible. Based on pure excitement and with no previous experience in the hospitality industry, we decided to take the big jump and have not looked back.

Three years on, we were unexpectedly approached by Channel Four to appear on their TV program Four In A Bed, in which four sets of accommodation providers each stay at each others property and judge their stay, at the end of the week the place with the highest scores win a Four In A Bed Plaque. We researched the program and decided it would be a good laugh to appear on the show, even though there can be a few heated moments between contestants. So, without any prior experience of appearing on TV my wife Sarah and I applied for the show, thinking that we'd never get chosen, but after a couple of interview's we were told that we had been accepted. We were excited and petrified at the same time!

We travelled to our first hosts where we met the whole production team and the other participants. The whole situation felt very strange at first, there were a lot of things we had to do for the camera that you wouldn't usually think about, for example we had to walk up to the front door three times so the team could get all the shots needed from different angles; everything seemed to take 5 times as long as it would do in normal life but the more we were being filmed, the more we got used to it. The production team were very helpful and supportive and certainly helped ease the nerves, and after a while we forgot that we were being filmed most of the time. We had a really pleasant time learning about the other participants and their places, as well as telling them our story of how we started up.

The days of filming are long, the crew are following and filming you from the moment you wake up, until the moment you go to bed, there is a lot that's said and we have no idea how it will all be edited or how we will come across. Unfortunately I can't say what happens in the show as I have been sworn to secrecy within the contract, but we had a fantastic experience taking part, we certainly learnt a lot and made some good friends and laughed the whole time.

You can watch Jay and Sarah participate in the next new series of Four In A Bed which will air mid September through to the end of October on Channel Four.



Best of Luck goes to Jay and Sarah and I'm sure your friends and acquaintances of the village will be watching the series to see how you get on. Unfortunately at present we do not know the actual date it will be shown.

BRIDGERULES BUZZING COMMUNITY = *facebook page*

'If you wish to promote an event in our village... want something ...or maybe have something for sale'

Then just let Stacey Hillier Cholwill know and she will upload it on to our face book page'.

Stacey is on 01288 381843 or email her on shillier357@yahoo.co.uk



BIRTHDAY WISHES:

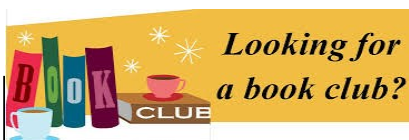
Pat Johnston for the 9th September
 Sheila Gatland for the 11th September
 Marilyn Pickett for the 15th September
 Terry rock for the 17th September
 Walter Lashbrook for the 18th September
 Rachel Smith for the 21st September
 Trevor Snowdon for the 22nd September.
 Brian Beadle for the 22nd September
 Gill Hedley for the 26th September
 Alan Weekes for the 29th September
 Barbara Bowden for the 9th October
 Ken James for the 19th October



Congratulations to *The Bridgerule Walking Football Team* in their recent competition.

The Tamarside Singers, a group of approximately 20 male and female voices who practice on a regular basis are looking for someone to accompany them on keyboard or guitar.

The singers practice each week in the Methodist Chapel and enjoy singing all types of songs. If you are interested please contact Sheila on 01288 381350 .



Do you enjoy reading? Are you interested in meeting with some other readers over a cup of tea or glass of wine to talk about the books you have read or may like to read?

If you are, then please let the editor of The Buzz know and if enough names come forward we will try and get our very own village Book Club formed.

ENGLISH TUITION and WRITING SERVICE

Experienced tutor based in Bridgerule currently has spaces available for private tuition.

- English Language and Literature up to A Level
- French to GCSE Level
- English as a Foreign/Second Language
- 11+/Entrance exams (including Maths/Verbal and Non-Verbal reasoning)
- Proofreading/editing essays or theses
- Help with written work/forms/CVs/letters etc

Bespoke classes in your home.
£25/hour, free initial consultation.

Please contact Katie 07976 599275 or katie_beat@yahoo.co.uk

Keep an eye on the village website

www.bridgerule.co.uk

Why not host your next party at:



Birthdays!
Anniversaries!
Christenings!
Kids Parties!
Garden Parties!
Pool Parties!



Contact Jay

01288 381 272

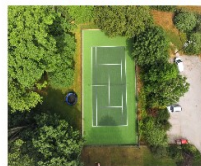
jay@glebehousecottages.co.uk



6 Luxury Self Catering Cottages

Swimming Pool, Tennis Court, Formal Gardens,

Cellar Bar, Games Room & Plenty more!



10% discount for friends and family of local residents.

01288 381 272

www.glebehousecottages.co.uk

jay@glebehousecottages.co.uk

BRIDGERULE REVEL WEEK 2019 FULL SHOW RESULTS

Children:

Decorated Pebble

Age 2-4 1st Josh Cobbledick

Age 5-7 1st Alice Chandler 2nd Heidi Cooper 3rd Harry Cholwill

Age 8-11 1st Holly Price 2nd Isobelle Gresswell 3rd Ella Cholwill.

Age 12-16 1st William Lucas 2nd Jasmine Masters 3rd Harvey Cholwill.

Painting/Drawing

Age 5-7 1st Mylor Woods 2nd Milo Sanders 3rd Alice Chandler

Age 8-11 1st Alfred Woods 2nd Jacob Masters 3rd Holly Price

Age 12 - 16 1st Jasmine Masters 2nd Jess Lewin

Homemade Carnival Crown

Age 5-7 1st Alice Chandler

Age 8-11 1st Holly Price

Homemade painted Paper Aeroplane

Age 8-11 1st Holly Price

Victoria Sandwich

Age 8-11 1st Oliver Sanders 2nd Scarlet Neep 3rd Benji Masters

Age 12-16 1st Jasmine Masters

Miniature Garden

Age 5-7 1st Alice Chandler

Age 8-11 1st Holly Price

Age 12-16 1st Millie Neep

OVERALL WINNERS OF REVEL SHOW

HOLLY PRICE



ADULT CLASSES

Victoria Sandwich	1st Freda Lacey. 2nd Christine Gee. 3rd Clarice Harris
4 Cheese Scones	1st Wendy Rimmer 2nd Clarice Harris 3rd Brenda Tole
Shortbread	1st Clarice Harris 2nd Joan Marshall
Flower Arrangement	1st Joan Marshall
Drawing/Painting	1st S. Steel 2nd Paula Quigley 3rd Kathy Whatmore
Needlework - Toy	1st Rose Hitchings
Knitting/Crochet	1st Wendy Rimmer 2nd Rose Hitchings 3rd Audrey Bewes
Craft/Hobby	1st Lizzy Davy 2nd Christine Gee 3rd Katie Chandler
3 Potatoes	1st Colin Cholwill 2nd Freda Lacey 3rd Hilary Taylor
3 Onions	1st Colin Cholwill 2nd Roger Neep 3rd Joyce Shadbolt
3 Carrots	1st Colin Cholwill 2nd Hilary Taylor
3 Runner Beans	1st Joyce Shadbolt 2nd Colin Cholwill
3 Beetroot	1st Colin Cholwill
3 Tomatoes	1st Colin Cholwill 2nd Hilary Taylor
Plant a Potato	1st Joan Marshall 2nd Colin Cholwill
Whopper Vegetable	1st Stuart Pinn 2nd Colin Cholwill
3 Veg Same Variety	1st Stuart Pinn 2nd Joyce Shadbolt 3rd Colin Cholwill

WINNING ENTRIES IN OUR RECENT CARNIVAL



Tamarside Singers



TOY STORY 4



Furse Family and Friends

CARNIVAL RESULTS

FANCY DRESS:

Aged 6-8 1st Little Match Girl Mylor Woods 2nd Chewbacca - Solomon Bowler

Aged 9- 12 1st Oliver—Alfred Woods 2nd Glitter Kitty Ruby Bowler

Walking Group — Gypsophilia 1st - Bude Drama Group

Equestrian Pony Club 90th Birthday—Tetcott & South Tetcott Hunt

TABLEAUX

Children's Open 1st Apollo 11 William Lucas & Lee Giles
2nd Toy Story 4 - Furse, Snowdon, Chard, Harrison Families
3rd Back to the 80's Braund Family and Friends

Humorous 1st Bradhemian Rapsody - Bradworthy Carnival
2nd 1956 Bridgerule Carnival Queen - Goodman and Bennett

Original 1st Old London Town - Tamarside Singers

Trade 1st/2nd Short and Abbott

Classic Car 1st Sheila Cholwill Rover Mini Sport 2nd Cadillac - Moorhouse

Vintage Tractor 1st 1976 Massey Ferguson Philip Cholwill
2nd Ford 3000—Grenville Cleave 3rd 1969 Massey Ferguson - Colin Cholwill

Queen of Queens - Fair and Carnival - Bude –Poppy Barber and Evie Jordon.

BEST SCARECROW

Di Priem

Scarecrow—Special Certificate

The Lucas Family

BEST HANGING BASKET

Shirley Abbott



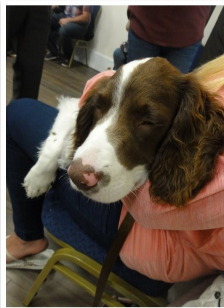
The opening of our Revel Week began with the crowning of Queen Ella. Phoebe was her attendant, Harry and Lenny her pageboys and Erin the flower girl. Ella thanked her family for helping with the preparations and declared the Revel Week open.



19 teams took part in the REVEL WINE AND WISDOM QUIZ.

A draw was declared at the end of the quiz between Bridgerule Quizers and Bude Quizers.

15 Teams took part in the Skittle Tournament. The final was eventually between Gary and his team and Georgia and her team. At the end of play a draw was declared and both teams decided to share the prizes.



Some relaxed Entries in our Indoor Fun Dog Show.



**ELLA READY TO LEAD THE 2019
CARNIVAL PROCESSION ON
HER CARNIVAL FLOAT**



**1ST IN CHILDREN'S
CLASS AND OVERALL
WINNER OF
CARNIVAL, APOLLO 11
ENTERED BY LUCAS
FAMILY**



**THIS YOUNG CHAP HAD A
BUSY WEEK BUT
DIDN'T HE DO WELL!**



**BEST IN SHOW FLORRIE WITH OWNER
DI AND WALKER NATE**



WE ALL ENJOY THE RAMBLE!



Coming soon...

Are there people in Bridgerule unable to buy or rent a home? Have people had to move away to find an affordable home?

Bridgerule Parish Council wishes to establish the extent of housing need in the Parish and the support for a small affordable housing development. Therefore we will be carrying out a housing need survey in partnership with Devon Communities Together (DCT), an independent charity, part of the Devon Rural Housing Partnership, who will produce an independent report.

In October we will be posting/hand delivering a survey form to every home in the parish.

It is really important that as many households as possible complete and return the form so that the Parish Council can be given as comprehensive picture as possible of housing need. The figures obtained will help them to plan for the future and ensure that, if a need is identified, the correct number and size of homes are built in the parish for local people.

The survey is being administered by the Rural Housing Enabler at Devon Communities Together. They will process the information and all personal details will remain confidential. No individual will be able to be identified from the survey report.

If you know someone who has moved from Bridgerule because they cannot afford accommodation then they can also complete the form. Extra forms can be obtained from Janice Alexander at Devon Communities Together on 01392 248919 Ext 7122 or email janice@devoncommunities.org.uk. Anyone needing any help with the form should also contact Janice for assistance.

If you believe you are in need of affordable housing, you should register with Devon Home Choice at www.devonhomechoice.com.

Terri's Driving School



**FULLY QUALIFIED GRADE A
DVSA APPROVED DRIVING INSTRUCTOR**

- Pass+
- Motorway lessons
- Flexible hours (weekends/evening)
- Female instructor
- Dual control car

Call Terri on
07557 983760

www.terrisdrivingschool.co.uk



No Transport? Need a pickme-up?



Ring & Ride

- Door-to-door service for all ages
- Wheelchair & scooter accessible

Cars for Care

- Door-to-door service
- Times to suit your appointments
- 45p per mile

Here for Hire

- Mini Bus Hire for Community Groups & Charities
- £50/day - £30/evening
- Self drive

Call

01409 259001

office@holsworthyrruraltransport.co.uk

The Carroll Suite, Holsworthy Memorial Hall, Holsworthy EX22 6DJ

Holiday homes from £29,995



**Limited
pitches
available**

To find out more pop into Reception, call 01288 381 404 or visit hedleywood.co.uk

Part exchange your tourer for a holiday home at Hedley Wood



**Holiday
homes from
£29,995**

To find out more pop into Reception, call 01288 381 404 or visit hedleywood.co.uk

PIANO LESSONS



WITH **AMY PUTT (ARSM)**

BASED IN BRIDGERULE
 EMAIL: AMY.PIANOLESSONS@HOTMAIL.COM
 TEL: 01288 381 802 MOB: 0746 058 6936

DENISE WELLINGTON FUNERAL SERVICES
 DIP FD

Independent, Compassionate & Caring

Bereavement Care Memorials Pre-Paid Funeral Plans

24 hour contact
 Tel: **01288 359277**

Golden Charter 

Thornelea St. Anne's Hill Bude Cornwall EX23 0LT

www.denisewellingtonfunerals.co.uk

enquiries@denisewellingtonfunerals.co.uk



Mobile 07493 047597 Tel. 01409 211635
 Professional Window & Gutter Cleaning

Brett's
Gleaming
Glass & Gutters



Water Fed Pole Window Cleaning
 System using
 Heated Purified Water

Gutter Cleaning ★

Soffit & Fascia Cleaning ★

Available to clean
 indoor windows ★

All work carried out from ground level and fully insured

Brett Debell, Chapmans Farm House, Chapmans Well, PL15 9SG.

Sam Edwards & Co.

GoodGarageScheme.com
for a garage you can trust

Registered Member

MOT TESTING STATION



- ✓ Very Competitively Priced Tyres
- ✓ Class 4 MOT Centre
- ✓ Servicing & Repairs
- ✓ Free Fluid, Battery & Tyre Checks
- ✓ Exhaust Systems
- ✓ Fault Diagnostics - All Makes
- ✓ Insurance Work
- ✓ Air Conditioning Service
- ✓ Free Collection & Delivery or Courtesy Car

CALL NOW; 01288 352008/07944 487898



Opening Times;

Monday-Thursday; 08.15-17.00 Friday; 08.15-16.00

Ocean View Road, Bude EX23 8NH

www.samedwardsgarage.co.uk

YOUR RELIABLE LOCAL GARAGE



Lufflands Caravan Park

*'Peace & Tranquillity in the Heart of
the Beautiful Devon Countryside'*



Our family owned and run exclusive caravan park offers the personal, friendly touches that make it your home from home!

Catering Exclusively for: Holiday Home Ownership, Holiday Home Hire &
Annual Touring Caravan Pitches

Cosy Bar catering for guests & visitors

Available for small functions

Email: maria@lufflands.com

www.lufflands.com

Tel: 01409 241426

Solden Cross, Holsworthy, Devon, EX22 7PJ
(Between Holsworthy & Bradworthy)



M&S Fencing

01288 381311

AGRICULTURAL, EQUESTRIAN & GARDEN

Competitively priced fencing
FREE QUOTATION



Covering DEVON & CORNWALL
Contact Matt - 07786228162

OUTSTANDING IN THE FIELD



Julia's
Holistic Treatments
For Mind, Body & Soul

Julia Trayford
A Holistic Therapist with ITEC Qualification

juliatraylor@gmail.com
01288 381680 or 07990 554370

M.A.G.
DOUBLE GLAZING REPAIRS

Are your local specialists for

- ◆ REPLACEMENT OF MISTY OR BROKEN GLASS UNITS
- ◆ REPLACEMENT OR REPAIR OF HINGES, HANDLES, LOCKS & SEALS
- ◆ INSTALLING LETTERBOXES & CAT FLAPS

Call Mark today for a free no obligation quotation on

07969 234161 or 01409 253828

OVER 10 YEARS LOCAL EXPERIENCE



**T: 01409
253 533**

2 Kingfisher Units
Holsworthy Ind' Est'
Holsworthy, Devon EX22 6HL

WWW.RENEWSW.CO.UK

**QUALITY WINDOWS, DOORS
CONSERVATORIES
SOLAR PV & ROOFLINE**

Your Local Renewable Energy Specialists



Humphrey Pullar
PROFESSIONAL CHIMNEY SWEEP
NACS & HETAS

Full Brush and Vac Service Birds Nests Removed

Smoke Testing

Appliance Servicing

Pots, Cows and Guards Fitted

Tel: 01409 240138

Mob: 07984406290

email: humphreysweep@mac.com



Little Munchkins Childminding



Care & education for 0-5 years

Funded sessions available for 2, 3 & 4 year olds

Opening hours: 8.30am - 5.30pm (Tuesday to Friday)

Childcare vouchers & tax free childcare payments accepted

Contact Lou on 01288 381813

or e-mail loucooper2010@hotmail.co.uk

J&P PLUMBING HEATING

**&
Home Maintenance**

Telephone Paul:

01288 381085

07500876642

07500708650



24
hr

Call Out

Oil Boiler Service and Repairs

JEWELLS CROSS SERVICE STATION AND RED POST GARAGE

Servicing - MOT - Testing - Repairs - Bodywork Break-down Recovery - Comprehensive Accessory Shops
Car Wash - Self Service Petrol & Diesel at Jewells Cross
Self Service Gas at Red Post

Jewells Cross Tel: 01288 381770



Mutley Crew Dog Club

Bridgerule Village Hall

Kennel Club Listed Club doing the Kennel Club Good Citizen Dog Scheme.
Obedience and Rally Obedience,

Tuesday Evenings – Puppies and Beginners – 7- 7.45 p.m

Advanced 8.– 8.45 p.m, Rally from 9.00p.m.

Hoopers training also available, please phone for information.

Contact Christine 01288 381104 or Margaret 01288 352427

J.J. LOGS & KINDLING TRANSIT TIPPER LOADS

Barn stored pre-cut lengths
of 9" or 12" long logs
Hardwood /Softwood
Full Loads/Half Loads
FREE kindling with each load
TELEPHONE 07765091886



AMAZING VALUE!!

Mobile Beautician special offers:

- Pedicures.
- Manicures.
- Toe nail cutting.
- Eyebrow shape & tint.
- Deluxe facials.
- Holistic Massage
- Reflexology

ONLY £10.00 per treatment.

Excellent value - Excellent service - Quality assured.

Tel: **07970 362 388** (Gift vouchers available)



ARTHUR W. BRYANT
FUNERAL SERVICE

BUDE
T/ 01288 352282

CAMELFORD
T/ 01840 214891

HOLSWORTHY
T/ 01409 253000

INDEPENDENT FAMILY
FUNERAL SERVICE

MEMORIAL
MASONRY

OUR FAMILY CARING FOR YOUR
FAMILY FOR OVER 50 YEARS

PRE PAYMENT FUNERAL
PLANS



W/ AWBRYANT.CO.UK
E/ CARING@AWBRYANT.CO.UK



HOWDENS

JOINERY CO.

BUDE

Proud suppliers of

Bridgerule village hall kitchens

Looking for a new kitchen? Come & visit us:

Unit 2, Kings Hill Industrial Estate,

Bude, Cornwall EX23 8QN

01288 942000

bude@howdens.com

TRADE ONLY

NOT TRADE? THEN WE CAN FIND YOU A LOCAL FITTER
BEST PRICE GUARANTEED ALWAYS



Man Friday

Carpenter & Building Services

No Job Too Small

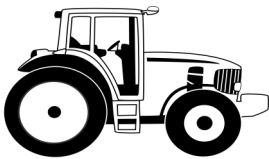
Doors, Flat Pack Kitchens, Bathrooms, Tiling.

Sheds & Decking. Property Maintenance

Free Quotes—Full Insurance Cover

Call Dave on: 01288 381507 or 07761 055071

Email: peggyhowmuch@gmail.com



SHORT & ABBOTT LTD

Agricultural Engineers

Sales, Service & Parts for all
makes of tractors and
Garden Machinery

Mill Road, Bridgerule,
Holsworthy, Devon EX22 8EL
Tel: 01288 381485

shortandabbott@outlook.com
www.shortandabbott.co.uk

DIAMOND

THE CUTTING EDGE IN

PROFESSIONAL
CARPET, CURTAIN
& UPHOLSTERY CLEANING

Domestic & Commercial

- Deep Hot Water Extraction Cleaning
 - Deodorising Treatments
 - Dust Mite Removal
 - Leather Cleaning
 - Stain Protection
 - Stain Removal
- Other treatment
also available

OUR PRICES ARE HARDER THAN A
DIAMOND TO BEAT

Call us now for a
FREE ESTIMATE

Call Mike on Holsworthy
01409 254816 or 07855 275088

Premium Carpets Week st Mary

Your local flooring specialist dealing with Britains, Karndean, Coramar, LVT, vinyl, and many more (keeping up to date with all the new trends).

We offer free home visits & meetings at our showroom by appointment only.
These can be made 7 days a week, and out of working hours to suit you.

Call us on:
Showroom: 01288341870
Mark: 07947695875
Sarah: 07572654465

Or email us : premium_carpets@icloud.com
 2, the old garage, week st Mary EX226UP






★★★★★




Bellissimo Sensational Cakes

Emily Fenwick Tel: 07502 434441

bellissimocakes@yahoo.co.uk



Birthdays - Hen Days - Weddings - Christenings - Baby Showers

<p>Southlands Court</p> <p>offers *</p> <p>full time care, respite/holiday care and day care</p> <p>*</p> <p>Peacefully Situatd</p> <p>Regular activities and outings</p>	<p>SOUTHLANDS COURT RESIDENTIAL HOME</p>  <p>Bridgerule, Holsworthy, Devon EX22 7EW Tel: Manager: 01288 381631 Tel: Residents: 01288 381642</p>
--	--

Alan & Julie Pike

Breezelyn Kennels

Titson Nr. Bude Cornwall EX230HH

Heated Kennels and Cat Chalets

Individual Runs - Large Play Runs
Grooming Service
Doggy Day Care



Tel: +44 01288 361680
Email: infor@breezelyn.co.uk
www.breezelyn.co.uk

S. D. MARTIN

PLUMBING, HEATING & RENEWABLES

*Gas Boilers Inc LPG ~ Oil Boilers / Tanks
Solar - Ground / Air Source Heat Pumps
Wet Underfloor Heating ~ AGA'S
Wood/Multi Fuel Burners ~ Safety Checks*

Tel: 01409 240 240

Mob: 07889 270 689

Email: steve.martin44@btinternet.com



GLASS DESIGNS

by Ray Priem

Glassmaker and designer ~ Hand formed and blown glass

Including engraving, sandblasting, glass bonding

Glass restoration commissions welcome

E-mail: ray@glassdesigns.co.uk Tel: 01288 381829/ 07879847568

Website: www.glassdesigns.co.uk

NOFIX-NOFEE

Tel: 01288 381061



- * No Charge for Local Call Out
- * Home and Office Visits
- * Virus and Infections Fixed
- * Weekend Repair Service
- * Refurbished Systems for Sale
- System Restore & Data Retrieve

Systems
Repaired
From

£25

Computer Repair Service

www.nofix-nofee.net



THE BRIDGE INN

General Knowledge Quiz

Every Sunday Evening at 8.30pm

Maximum of 6 per Team

Jammin Nights - Monday & Wednesdays 8.00pm

BT SPORTS NOW BEING SHOWN

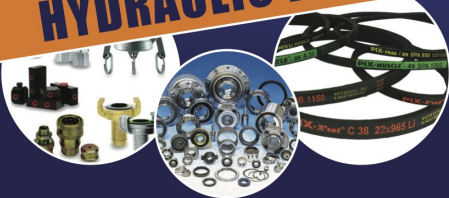
Also **HOLIDAY FLAT TO LET**— Please contact Pam or Gary Bowler

On Telephone Number: 01288 381316

Hydramatic
ENGINEERING SUPPLIES



**NOW MAKING
HYDRAULIC HOSES**



www.hydramatic.co.uk

Unit 4, Bude Business Centre, Kings Hill Ind Estate
Bude, Cornwall EX23 8QN



FLOWTECH
Heating Services

*Oil and Gas Heating,
Plumbing and Renewables*

- Oil, Gas & LPG Work
- General Plumbing
- Heating Installations
- Boiler Servicing & Repairs
- Boiler Installation
- Heat Pumps & Biomass



01288 381530



07766 258431

www.flowtechheating.co.uk



NEATE FEET



For all your foot health
needs

*Professional foot care in the
comfort of your own home.*

- *Painful Callus Reduced
- *Toenail Clipping
- *Ingrowing Toenails
- *Painful Corns Removed
- *Paddings & Dressings
- *Verrucae Treatment
- *Reflexology

Claire & Simon Neate DIPC FHP

Qualified foot health practitioners

07968232344 / 07870508867

**Edge
Kitchens**

**In Need
of a
New Kitchen?**
Look No Further

**With Premium Grade Cabinets
Soft close doors and Drawers**

Scratch Resistant Doors

Seamless Work Top Joints

2mm Colour match Edging

AND

**CUSTOM MADE CABINETS
AT OFF THE SHELF PRICES**

SUPPLYING BOTH TRADE & DIY

TOMORROWS KITCHENS

YESTERDAYS PRICES

Call EDGE KITCHENS TODAY

For a free no obligation

DESIGN & QUOTATION

on 01288 341010

**HAS YOUR KITCHEN
GOT THE
Edge**

BUDE EYE CENTRE

Tel: 01288 350041

www.budeeyecentre.co.uk

Fax: 01288 350140

info@budeeyecentre.co.uk

- Private & NHS Eye Examinations
 - Local, Professional and Friendly
Sunglasses Incl Ranges
 - New Hearing Service available with competitively priced Repair service and
half price hearing aid batteries
 - Contact Lens Consultation
 - Large selection of Spectacle Frames
 - Same Day Service Available
- Wheelchair/disabled access. 7 Queen Street Bude EX23 8AY



PAINTERS AND DECORATORS

dspaintingdecoratingbude.com

Call Dan on 07712436690 or 01288 353 059

Email dansims48@hotmail.co.uk



Planning Permission

Building Regulations

Please feel free to contact us for a free
no obligation visit and quote

☎ : 01288 352121

✉ : info@rarowe.co.uk

🌐 : www.rarowe.co.uk

LADIES MOBILE HAIRDRESSER

FOR
HAIR CUTS OR
SHAMPOO SETS IN YOUR
YOUR HOME



CALL
HILARY
Qualified Hairdresser

Telephone: 01288 381332

Home & Garden Maintenance Services



No Job too small

Internal & external
jobs considered

Call Matthew Ward
now on
07401 216816
for a free quote!

Premier
Whitstone Village Stores



Café Lounge Bar

Tel: 01288 341 444 for the latest info find us on FACEBOOK

Have you tried our Café Lounge Bar ?

Coffee and light bites all day everyday

Bar open til 9pm - Saturday breakfasts from 8 - 1

**Sunday Carvery Eat in or take away
midday til 3pm and 5pm til 7pm**

Every Sunday

"rated excellent on tripadvisor"

Freshly baked Pastys available everyday from 7am

Fresh bread & cakes

Wide range of fresh and chilled foods

Extensive off licence including over 20 local Gins

Barista quality Coffee to enjoy in or take away

Free Wi Fi Venue available for meetings, parties, wakes etc

Private carveries welcome for groups of 12 or more

Post Office - Lottery - Free to use ATM

For all of our latest news offers and more coupons visit us at
[@whitstonevillagestores](https://facebook.com/whitstonevillagestores) or just scan
here >



Greenfield
engineering



T +44 (0) 1409 254400 vacancies@greenfieldengineering.co.uk
F +44 (0) 1409 254 898 **GREENFIELD ENGINEERING CO.UK**

Professional
Treatment of
your Foot
related
problems in the
comfort of your
own home.

Wendy Cook

SAC DIP FHPT/ SAC FHPP

Mobile Foot Health Practitioner

Call Wendy on
01288 331311 or
07813772095

**JON AND HEATING
PLUMBING PIPER**

DISABILITY ADAPTATION SPECIALISTS

T: 01288 381 536

M: 07825 698 529

Info@jonpiper.co.uk



City & Guilds

HOT TUBS!

IMMERSE YOURSELF IN
TOTAL RELAXATION

POPULAR FOR MANY SPECIAL
AND SOCIAL OCCASIONS



**HOLSWORTHY
INFLATABLE HIRE
HOT TUBS**



BIRTHDAYS,
GARDEN PARTIES,
STAG & HEN DO'S
OR EVEN
JUST AS THE
ULTIMATE TREAT!



BOOK NOW

CALL: 07957921607

WWW.HOLSWORTHYINFLATABLEHIRE.CO.UK

**Bradford
Pre-school**



Term Time Day Care for 2-5 Year Olds

Tax Free Childcare & other vouchers accepted

Funded places for 3 year olds available (and 30 hours extended
entitlement & 2 year old funding, if criteria met)

Bradford:

Open 9am-3:30pm

**Tuesdays, Wednesdays
& Thursdays**

Bridgerule:

Open 9am-3pm

**Mondays, Wednesdays
& Fridays**

For more information,
please call on:

Bradford **07792 501476**

Bridgerule **07879 955874**

email on bradfordpsn@aol.com or visit our website

www.bradfordpreschool.btck.co.uk



CLUBS/CLASSES THAT REGULARLY MEET IN OUR HALL

Mon: Beat Bounce Mondays 6-7pm and 7-8pm Brooke 07715560912

Use it or Lose it—2.00pm Gill Aston 01409 254642

Tues: Village Coffee Club 10.30am - every 2 weeks 01288381350/402

Table Tennis From 2.00pm Contact Jill on 01409 254349

Dog Obedience From 7.00pm Contact Christine on 01288 381104

Wed: Art and Craft (two weekly) 2.00pm Contact Joan 01288 381002

Fri: Short Mat Bowls - From 2.00pm Contact Alan on 01288 382988

SALLY'S .MOBILE DOG GROOMING



BATHING DRYING CLIPPING
HANDSTRIPPING NAIL CLIPPING OF
SMALL - MEDIUM DOGS. HOLSWORTHY /
BUDE and surrounding area call

07969837552. Or 01288 382988 For a
quote and chat about you dogs needs

SKIPP AGA Servicing

07895 741 322



Email: paul@skippagaservicing.co.uk or visit the website skippagaservicing.co.uk