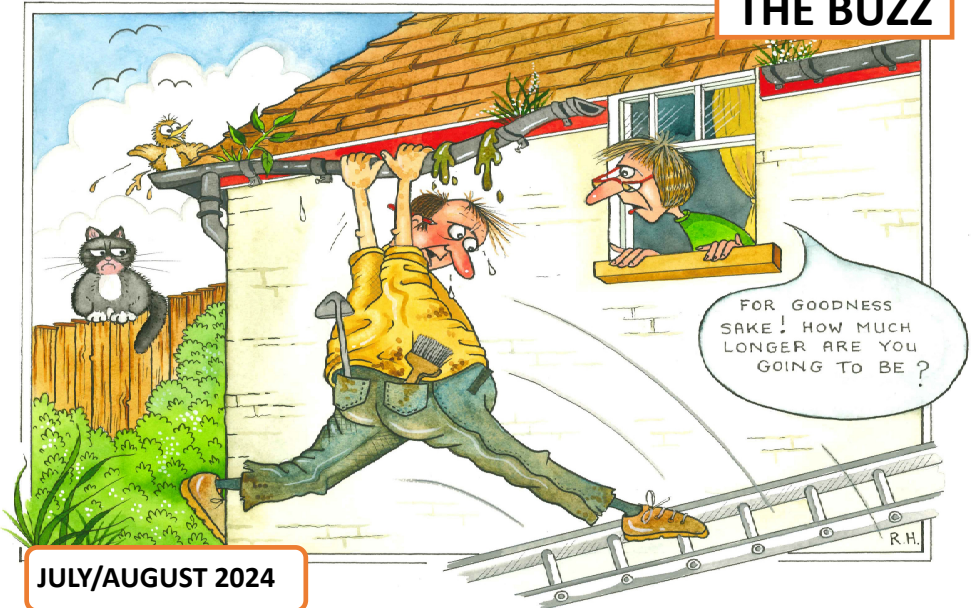


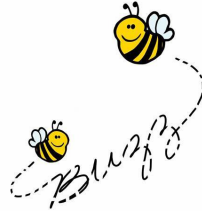
## THE BUZZ



JULY/AUGUST 2024



Sheila Cholwill Editor of Buzz  
 email: sheilacholwill@btinternet.com  
 telephone: 01288 381350



**A very busy Buzz this time. Please remember if you have anything for the next Buzz it must be with me by 20th Aug.**



#### REMEMBERING CINDY

Cindy Neep was taken from us so suddenly, a few years ago. She was so important to 'Open Gardens', working tirelessly and being a founder member. She was also a committee member of our Revel Week and the whole of Cindy's family becoming involved each year for both events.

In remembrance of this and of the money Open Gardens donated to the Air Ambulance the Parish Council thought it very fitting that a plaque remembering Cindy be placed on a bench by the river.

Roger is seen here seated beside the plaque together with members of his family.





### THE BRIDGE INN

Come along to The Bridge Inn on  
July 9th at 7.30pm

A group of Morris Men will be entertaining.  
Come and soak up the atmosphere and support your village pub.

### St Bridget's Church, Bridgerule



Saturday 20<sup>th</sup> July 2024

Bridgerule Village Hall  
10.30am – 12.30pm

Raffle and various stalls

Please come along and help us raise much needed funds for the church.

### BRIDGERULE COMMUNITY SHOP LIMITED

### ANNUAL GENERAL MEETING

THURSDAY 11TH JULY 2024 - 7.30pm

Everyone are cordially invited

Kevin Bowditch - Chairman



**BRIDGERULE REVEL WEEK**

**MONDAY 29TH JULY -  
SATURDAY 3RD AUGUST**

**WHATS ON!**



**BRIDGERULE REVEL WEEK**

# Car Treasure Hunt

Approximately 20 miles, but! within  
A 5 mile radius of Bridgerule.

**Monday 29th July 2024.**  
(Start sheets available from: 6.00pm – 7.30pm)

Entry Fee: £2.50 per adult  
All Children free.

Start at:  
*The Village Hall*

and  
finish at:  
*The Bridge Inn*

"Prize for the highest score, IT'S NOT A RACE"

**ANNUAL VILLAGE  
FLOWER, VEGETABLE  
AND CRAFT SHOW**

**TUESDAY  
30TH JULY**

**CREAM TEA  
4.00PM**



**COME AND VIEW THE  
ENTRIES**

**PLEASE NOTE  
COMPLETE SHOW SCHEDULE  
ON CENTRAL PAGES  
OF THIS BUZZ**



# FAMILY Quiz Night

**£2 PER PERSON - MAX 6 PER TABLE**  
PRICE INCLUDES A DRINK AND SNACKS ON YOUR TABLE

**WEDNESDAY  
31ST JULY** | **DOORS OPEN  
AT : 6PM**

**BRIDGERULE VILLAGE HALL**

» CHILD FRIENDLY QUESTIONS INCLUDED «



**THURSDAY 1ST AUGUST**

**PRIZE BINGO**

**Doors open 7.00pm**

**Eyes down 8.00pm**

**FRIDAY 2ND AUGUST**



**SKITTLE  
COMPETITION**

**Teams of 4  
to include 2 ladies**

**Entrance Fee £2 per person**

**Please enter your team to  
Audrey Bewes 381402 or  
Georgina Hemmings 381089**

**Light Refreshments/Raffle**

**EXCITING NEWS!! THE RAMBLE IS NOW ON THE SATURDAY OF REVEL WEEK!!**

  
**Friends of Bridgerule School (FOBS)**

**FOBS  
FAMILY FUN  
AFTERNOON**

**Saturday 3rd August  
starts @ 3pm**

**BRIDGERULE VILLAGE HALL**

**AFTERNOON ACTIVITIES:**

- Fancy dress
- Coconut shy
- Splat the rat
- Lucky Dip
- 50/50 board
- Tombola – adult and children's
- Tattoos
- Face paints
- & more!!

**BAR MUSIC**

**BBQ**

**RAMBLE**

**£5 PER ADULT**

**£2.50 PER CHILD**

Prices include burger or hotdog per ticket  
Under 3s are free

**ALL CHILDREN TO BE  
ACCOMPANIED BY AN ADULT  
AT ALL TIMES!**

**DOGS  
WELCOME**  
Dogs must be kept on a lead

**TRACTOR & TRAILER  
RIDES TO BRING YOU  
BACK HALFWAY OR AT  
THE END OF THE RAMBLE**

Please don't forget  
suitable footwear  
for the stream crossing





## OUR LATEST VILLAGE POSTER CABINET

Keeping you in touch!



NEAR TO SCHOOL

## POTTERS FISH n THINGS

**SCHEDULE FOR VISITING BRIDGERULE  
VILLAGE HALL CAR PARK**



**THURSDAY 4TH JULY 16:30- 19:00**

**THURSDAY 18TH JULY 16:30 - 19:00**

**THURSDAY 01st AUGUST 16:30-19:00**

**THURSDAY 15TH AUGUST 16:30-19:00**

**THURSDAY 29TH AUGUST 16:30-19:00**

## BRIDGERULE METHODIST CHAPEL

**SERVICES 11.00 am**



**July 7th Andrew Pitt**

**August 4th Local Arrangement**

**July 21st Barry Bryne**

**August 18th Chris Forster**

**July 28th At St. Bridget's**

**August 25th At St. Bridget's**

## St Bridget's Church

### Easy Fundraising

St Bridget's Church, Bridgerule is registered with [easyfundraising.org.uk](https://www.easyfundraising.org.uk), which means you can raise FREE donations for us every time you shop online. Over 7,000 brands will donate to us when you use easyfundraising to shop with them – at no extra cost to yourself!

These donations really mount up and make a BIG difference to us, so we'd really appreciate it if you could take a moment to sign up and support us. It's completely FREE and only takes a moment.

You can find our easyfundraising page at  
<https://www.easyfundraising.org.uk/causes/stbridgetschurchbridgerule>

Or using the QR code:



## ST. BRIDGET'S PARISH CHURCH

### SUNDAY SERVICES 11.00am



<b>07th July</b>	<b>Eucharist with Rev. Alison Hardy</b>
<b>14th July</b>	<b>Morning Prayer with Miss Val Harris</b>
<b>21st July</b>	<b>Joint Service at the Methodist Chapel</b>
<b>28th July</b>	<b>Stanhope Park Holsworthy. Open Air Service</b>
<b>04th August</b>	<b>Eucharist with Rev. Alison Hardy</b>
<b>11th August</b>	<b>Morning Prayer with Mers. Mary Aicheler</b>
<b>18th August</b>	<b>Joint Service at Methodist Chapel</b>
<b>25th August</b>	<b>All Age Eucharist with Rev. Alison Hardy</b>



## **BARRY AND JOAN MARSHALL**

### **CELEBRATE THEIR**



We were both serving in the Forces when we first met, I was in the Royal Navy and Joan was in the W.R.N.S. It was May 1961 and I had a job as a Aircraft Mechanic working in the Engine Repair Shop at the Royal Naval Air Station at Lossiemouth in Scotland. I had not long returned from an 18 month posting in Malta and Joan, as a newly trained Air Mechanic, was sent to the department as part of her post training work experience.

In January of the following year I was posted to a front line Helicopter Squadron based initially at Culdrose near Helston but subsequently bound for a 18 month deployment aboard HMS Albion. We were engaged in April of that year and Joan persuaded the WRNS to send her to Culdrose so we were able to spend some time together before I departed in October aboard the 'Albion' bound for the Far East. As it turned out the Squadron spent the majority of the next 18 months in Borneo assisting the Royal Marines in the conflict between Malaysia and Indonesia. On my return to the UK in April 1964 I discovered that plans for a wedding were well under way orchestrated by my Mother and Joan.

The wedding took place in the Catholic Church in Wellington, Shropshire and we honeymooned in Newton Ferrers on the Yealm river in Devon. The following year found us in Arbroath in Scotland where our son was born in August of that year. In 1966 I decided to leave the Royal Navy and transferred to the Army but continued to work on Helicopters.

### **August 25th Joint Service at St. Bridget's**

Whilst living in Middle Wallop in Hampshire, our daughter was born in January 1969. Having been born with severe Spina Bifida she sadly passed away in April 1971. In May 1972 I was posted to Plymouth to work with the Royal Marines. This resulted in a lot of time away from home but military families have a tremendous community spirit and look after one another.

Another stint at Middle Wallop and then a long term deployment to Northern Ireland, somewhere Joan did not wish to live. This resulted in Joan moving back to 'married quarters' in Plymouth and subsequently we purchased a house in St. Dominick near Saltash. In 1980 I returned to serve with the Royal Marines which encompassed the Falklands War and my retirement from the Army in 1983.

We moved away from the South West to Cambridgeshire where we lived for 13 years during which I squeezed in 3½ years working in Germany. After spending 6 years living in Lancashire I took retirement and we moved to the Republic of Ireland for a short while before buying our present home here in Bridgerule in 2005 and moving in during March of the following year.

We celebrated our Silver Wedding anniversary by a trip to Cyprus and for our Golden Wedding in Jersey.

This year we are staying closer to home at

**We thank Barry and Joan for their interesting contribution to this issue of the Buzz. Our congratulations go to them on the occasion of their Diamond Wedding Anniversary on 8th August.**

an Hotel in Devon.



**ZUMBA GOLD – Low Impact**

Monday Morning 09.45 – 10.45 am  
11.00- 12.00 am

Licenced Instructor Sharon Martin

Tel: 07805026364 /or email  
shazforty@hotmail.com

**TABLE TENNIS**

Tuesday from 2.00pm

Contact Alan on  
01288 382988 or  
email quilts@hotmail.com

**PILATES** - Tuesdays 5.45 - 6.45  
7.00—8.00

EMILY SKERRETT

Email: [ems1982a@gmail.com](mailto:ems1982a@gmail.com)

Tel: 07828947545

**ART AND CRAFT CLUB**

Wednesday afternoon  
Contact Kath on  
01288 381459 / or  
[Kathwhatmore@gmail.com](mailto:Kathwhatmore@gmail.com)

**DOG OBEDIENCE CLASSES**

Telephone Christine on  
01288 381104 or  
Mutley Crew Dog Club  
Facebook

**SHORT MAT BOWLS**

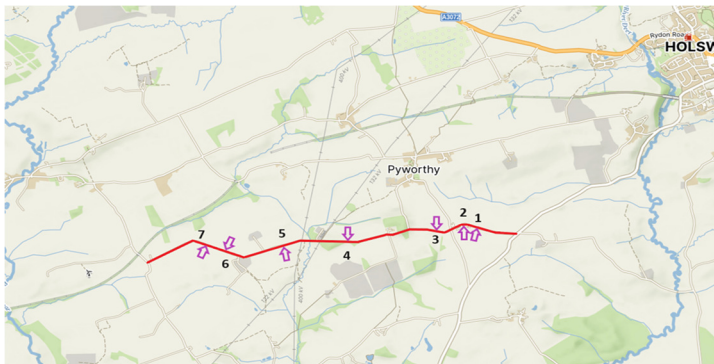
Friday from 2.00pm  
Contact Scott on 01288 381459  
or email [sdwhatmore@gmail.com](mailto:sdwhatmore@gmail.com)



## Road Works and Closures



The Derril Water Solar Park project is progressing well. You may have seen works starting in the road for the construction of the passing bays. Here's a summary of what we expect to happen during July and August;



A temporary compound has been set up to accommodate vehicles and welfare facilities needed by the road works team. The passing bays are due to be completed by end July. Numbers 3 to 7 will be ahead of 1 and 2. Diversions will be in place until those works are complete and we appreciate everyone's patience. The site entrances into the solar park itself are also due to be complete by end of July.

National Grid is installing ducts that will be used for the solar park cables connecting to Pyworthy substation.

Once the roadworks are complete, work on the solar park will start in earnest in August. The majority of that work will be fencing and construction of the on site access tracks. A larger works compound will be set up to accommodate vehicles and cabins needed by the full construction team.

Remember, Derril Water Solar Park is Ripple Energy's exciting shared solar project in the UK. Members not only benefit from clean energy but also share ownership. If you have any concerns or need to report special events in the area that might affect works, please reach out to

[DerrilWater@RippleEnergy.com](mailto:DerrilWater@RippleEnergy.com)

**'MANY CONGRATULATIONS must go to our Sheila Ann Cholwill** - at last she has been rewarded for all the amazing things she has done and does do for our village of BRIDGERULE and also for CHILDREN'S HOSPICE SOUTH WEST.

**Sheila has been awarded the BRITISH EMPIRE MEDAL for services to the Children's Hospice and for her amazing input into our village of Bridgerule** - this she has done for many years.

To list just a few of her accomplishments she has been the editor of our village magazine - The BUZZ - for the past 15 years which informs us all of what is going on here. Both Sheila and her family have raised a truly outstanding amount for Children's Hospice South West by making and selling wooden reindeer each Autumn for several years. The total amount made so far is £53000. She is Treasurer and Hon. Secretary of several committees here in Bridgerule and beyond and also a member of our Parish Council giving lots of her time in trying to work towards changes that will benefit us all. It was Sheila who started up the village choir known as The Tamarside Singers' which still continues - and she has been playing the organ for both chapel since the age of 14 which is an amazing accomplishment.

Sheila has been a volunteer at St Austell Children's Hospice once a week (an 100 mile round trip) until covid stopped this but now she works as a volunteer every Thursday in their charity shop in Bude. For many years she was chairman of our fun Revel Week sorting licensing, first aid, road closures and bands etc. well before the first committee meeting had been held each year - and therefore leading a committee which gave Bridgerule a week of fun evenings - ending on the Saturday with a Carnival many of us will remember for ever. Streets were lined 5 deep in places it was so popular and the fun we all had taking part was extraordinary. Sheila is still involved with Revel Week but gradually getting younger members of the village to help her.

There is Coffee Club we can mention which brings people together and in many cases stops loneliness and this connects to the summer coach trips Sheila and Audrey organise which takes us to some lovely places.

Sheila has shown great skills at applying for Grants over the years - first in connection to the village hall's refurbishment and getting a new roof through lottery funding along with Chris Hitchings, who was chairman at the time. She also, through grants raised money to refurbish the Children Play Park. But more recently she has gathered in an astonishing £75,000 which has made it possible for us to have a village shop again.



The shop is proving to be a real asset and a lovely place to meet up and chat. It has to be said that for all the effort Sheila puts in to the village she often says 'it's team-work and couldn't be done without others' - **but every team needs a leader** - and this leader can often be found scrubbing the hall floor and sweeping up - far more than the allotted time she has volunteered for. Sheila will tackle most jobs here - she has no airs and graces and importantly is extremely likeable too - a good friend to many. This doesn't include everything Sheila does and takes part in ..... So we must sincerely thank Sheila for all she has done for Bridgerule and long may she continue to do so. Thank you Sheila - and be proud - you are amazing. Every village should have its own 'Sheila'.

### ***Rose Hitchings***

#### ***Response:***

I am extremely proud, honoured and feel very privileged to receive such an honour from King Charles. Colin and I had known since the middle of May and had to keep it a secret from even Paul and Stacey. The shop opening was about to take place together with going on holiday with friends. But we did it!! I must say to see a mention of your name being awarded the BEM at the Kings Birthday Honours in all the National papers was unbelievable.

I have received a letter (well 2 actually) one from the Lord Lieutenant of Devon and Cornwall congratulating me and inviting me to receive my medal at a local ceremony in Exeter or Truro. Later to attend a Royal Garden Party. ( I have already mentioned this to Paul and Stacey. The thought of getting around London does not fill me with exact pleasure with my fascinators on)!!

My cousin, Eileen with some assistance from Rose, Paul, Neal Street and some others have helped to make this happen. Starting way back in 2020. Earlier in 2024 Eileen was contacted by the Cabinet Office requesting more information and she began to think perhaps in 2024 her 'cuz' as she calls me, will be honoured. She was right!!

Paul put a lovely piece on Facebook the day before Fathers Day and the response I received and am still receiving has been over whelming.

I love the village I have lived in for 67 years and with help, we have made some things happen. The legacy our Mark has left by the raising of money from 'wooden reindeers' to help those who like him, need care at Little Harbour means the world to our family.

So thank you everyone. It does mean so very much! - Sheila

## Neighbourhood Watch Notes



First may I congratulate Sheila, our editor, on being awarded a British Empire Medal in the King's birthday honours for all her work in the community and the village.

The benefit of Neighbourhood Watch is looking out for your neighbours. Whether they are away on holiday or here all the time. Being aware of what goes on around you and them, not nose, just aware.

Do you know what to do if something strange happens, or out of the ordinary? Is it a crime looking to happen? If it becomes apparently a crime call 999.

If on reflection it could have been something, you can call Crimestoppers on 0800 555 111 or go to "[www.devon-cornwall.police.uk](http://www.devon-cornwall.police.uk)" and follow the 'report a problem' part. Easier than ringing 101.

Did you get the flyer about check a trader? None of them local. If you need work doing ask a neighbour if they know someone who may be able to help.

Our village magazine The Buzz has most needs catered for but it needs some financial help as well as contributors and distributors. Sheila's medal doesn't come with a bursary.

But, back to my usual warnings. It's holiday time and the criminals have their holidays as well. Don't let them have any of your holiday enjoyment. Keep your stuff away from prying eyes and grasping hands. Who's knocking at your door? If you don't know them - why let them in?

Don't respond to funny phone calls even if saying your money is at risk. Watch 'Scam Interceptors' and put the phone down on these callers. No respectable firm wants your bank details in a phone call to you.

Businesses are not immune to scam phone calls either claiming to be from The Fraud Department. Rubbish. Call 159 yourself and talk to your bank's fraud department.

I could go on about cheap shoddy goods offered online being dangerous as shown on the TV recently.

Use the common sense you were born with and keep safe.

John McDougall

## SHEILA'S MENTIONS

August 01st Audrey Bewes

August 5th Linda Weekes

14th August David Hale

15th August Raymond Bewes

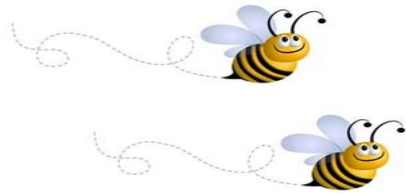
26th August Ellie Mitchener

29th August Linda Goodman



The village was shocked and saddened to hear that Martin, son of Trevor and Linda Snowdon and brother to Adrian and Graham had been involved in a car accident which resulted in Martin's death. His funeral has taken place and we send our love to the family.

Our thoughts are with Sue Cowan-Dickie and her family. Victor, her husband, recently passed away. The funeral has taken place.



**BRIDGERULE JIVE CLUB - Bridgerule Village Hall - 7.30 - 11.30pm**

**27th July                      DJ Dynamite Dave - £5**

**31st August                  Tory                                  - £10**

**More info - text Jackie on 07533353388**

**FRIENDS OF OUR VILLAGE**  
**BRIAN AND LYNDSEY**



**WE VISIT**  
**THEIR NEW HOME!**



We can't believe it is nearly a year since we decided to leave Bridgerule. It was a massive decision as Lyndsey was so sure it wasn't going to work. Downsizing from 4 bedrooms to 2 and moving to a fully furnished park home in Dorset meant reducing the contents of our home to 1/4 of what we had, Lyndsey's collection of crockery and ornaments and my workshop full of tools all had to go. The biggest wrench of course was leaving behind our network of dear friends and acquaintances that we had built up over the past 11 years.

We were extremely fortunate to find probably the only person on the market looking to buy right before the property slump. To leave behind everything that we had achieved in Bridgerule setting up the bowls club, table tennis club, art and craft club, singing with the Tamarside Singers and jamming with Bridgerule jammers every Wednesday evening all added to the trepidation as we left on June 14th 2023.

From day one on arriving at our new home we were welcomed with open arms, our new neighbours "all younger than me" have turned out to be a fun-loving group. We all help each other if needed. We have a Premier store on site a bus stop within 100 yards with hourly bus services to Swanage Poole, Bournemouth all for free. Fantastic scenery as we are only 3 miles from Corfe castle and Arne RSPB reserve.



2 days after arriving the deer turned up at our doorstep like a welcoming party and were hand fed by Lyndsey. Our doctor's surgery is fantastic we can walk in any day and see a doctor. And Dorset hospitals surpass anything we had in Devon.

So do we miss Bridgerule and all of you of course we do. You will always be in our memories. One word of advice to any newcomers to Bridgerule, get yourself out there to the pub and village hall and immerse yourself in village life. And of course, if any

of you are down Stoborough way on the beautiful Isle of Purbeck do pop in and see us.

P.S the gardens were designed by Lyndsey and constructed by our good friend Geoff and myself. Take care all of you. Love from Lyndsey and myself.

*Thank you for sharing your new home with The Buzz Readers.*

*It looks lovely!. I'm sure you will still visit us from time to time.*



### **BRIDGERULE PARISH COUNCIL—IMPORTANT NOTICE REGARDING LAND AT THE RIVERSIDE AREA**

The Parish Council have been given use of the land at the Riverside area in Bridgerule, which it makes available for all residents and visitors to use and enjoy and the area is a lovely tranquil open space with riverside walks and a seating area and picnic bench. Recently, the area has seen increasing amounts of dog fouling by a small minority of irresponsible dog owners. This is not acceptable behaviour, and deflects from those responsible owners who do use and enjoy the area with their dogs and clean up behind them as necessary.

In Torridge, it is an offence for a person in charge of a dog not to clean up immediately if the dog has fouled on public land. If this fouling continues unabated, the Council **will not** hesitate to take prohibitive and preventative action for the area and it will no longer be available for public use. The council would also like to take this opportunity to remind residents that Dogs are not allowed on the Playing Field at any time or in the Playpark at the Village Hall.



**Our Annual Flower, Vegetable and Craft Show**  
**will take place as part of our Revel Week on Tuesday 30th July.**

***All entries to be at the Village Hall from 10.00 am—1.00pm***

***Vegetables to be placed on a WHITE paper plate.***

***ONLY ONE ENTRY PER CLASS***

***Adults 50p per entry. Children Free***

**Overall Winners to receive a Perpetual Cup**

**Rosettes will be awarded for 1st, 2nd, 3rd in each class**

**Child with most points to receive a trophy to retain**

***SCHEDULE: ADULT CLASSES:***

***Home Grown Produce***

***3 Potatoes on a plate***

***3 Onions on a plate***

***3 Carrots on a plate***

***3 Peas on a plate***

***3 French Beans on a plate***

***3 Runner Beans on a plate***

***3 Beetroot on a plate***

***3 Main Crop Tomatoes on a plate***

***3 vegetables of same variety not on schedule on a plate***

***A Whopper— Large Vegetable grown by the entrant***

***A Vegetable Misshape from your garden***

***Cookery:***

***Chocolate filled Sponge with dusting of icing sugar on top***

***Savoury Flan***

***3 Mince Pies***

***Floral Art:***

***A Floral Arrangement in a shoe***

***Pot Plant:***

***A House Plant not necessarily flowering but one that you have nurtured for some months***

### Adult Classes Continued:

**Art:** Drawing or Painting unframed / framed up to A3size  
Decorated Pebble

#### **Craft Section:**

Knitted item made by entrant

Crochet item made by entrant

Embroidery made by entrant

*(can include Cross Stitch, Petit Point, Crewel Work and Tapestry)*

#### **Photography:**

*A photo of an attractive view of Bridgerule -*

*suitable for Printing on a postcard at a later date*

*A photo of something or someone to make the judge smile.*

### CHILDREN'S CLASSES:

#### **Baking:**

*3 Sausage Rolls baked with shop bought puff pastry*

*Ages 8-11 and 12-16*

*3 Jam Tarts with shop bought pastry Age 5 –7*

**Art:** *Decorated Pebble Ages 7-8, 9-11 and 12-16.*

*Students own choice drawing/painting—Any Medium*

*Size A3 or smaller Age 12-16*

#### **Floral Art:**

*Floral Arrangement in a shoe or boot*

*Ages 4-6, 7-8 and 9-11.*

Pre-School Aged 2-4 : Decorate a provided flower template with any medium. (Template available from shop)

Class 1: Aged 4-7 : Self Portrait on a white paper plate using any suitable craft material.

Class 2: Aged 7-9 : Make and decorate a clay pot.

Class 3: Aged 9-11: A Bob Ross style painting.

*The above 4 classes will be completed in school but those who do not attend Bridgerule can enter where appropriate from home.*



## AI has got it wrong!

I have been on the periphery of AI for some time, but have found contrary to many peoples understanding, AI is a long way off from being the tool to save the planet. Moreover, if it continues on its present trajectory and without suitable Governmental controls it could very well be our destruction.

Sadly, thieves and scammers are very much in the forefront exploiting its weaknesses as a useful tool.

For example, I wrote an advert on eBay selling a broken laptop, the copy reads;

"I am selling a damaged Lenovo laptop B50 for spares, the unit will not boot up and has some keys missing, sold without ram, adapter or hard drive. UK sales only returns not accepted".

I copied that text into Ebay's AI copy writer, this what it gave me;

"This laptop is perfect for your computing needs. It is a reliable and efficient device that will help you get your work done with ease. Whether you need it for work or personal use, this laptop is sure to meet your requirements. With its sleek design and powerful specifications, it is a great choice for anyone in need of a high-performance laptop. It is ideal for multitasking, running multiple applications, and browsing the web with ease. So, whether you need it for work or play, this laptop is the perfect choice for your computing needs".

There's no mention of damage or that it does not work. Only a spin on the manufacturers promotional copy!

People should be aware anything presented via the internet these days can be **fake!!**



Imagery, Voice, Music all can now be cloned, reconstructed and presented falsely as the real thing. Much work needs to be done, both in development and in governmental control before it becomes the saviour of mankind.

BT has decided, as it is so far behind schedule, it will delay terminating the existing analogue telephone system and will introduce the compulsory digital VOIP system in 2027 and not 2025 as previously planned. EE will takeover BT's retail arm in a rolling change and Open Reach will be the Broadband supplier. Incompetence will continue as before, without change!

For free telephone advice call Brian Meadows on 01288 381061

Nofix-Nofee Computer Repair Services

## BRIDGERULE REMEMBERS ANNIVERSARY OF D DAY



**TATSON FARMHOUSE**

**BED & BREAKFAST**

Telephone 01288 381011

[tatsonfarmholidays.co.uk](http://tatsonfarmholidays.co.uk)





## Delicious Home Baking Kits

"So Tasty, So Easy"

The Perfect Gift - Birthday, Thankyou, Christmas

[www.scrummiejars.co.uk](http://www.scrummiejars.co.uk)  
[scrummiejars@gmail.com](mailto:scrummiejars@gmail.com)

**Kates Complete Feet**  
**Foot Healthcare**  
**and REFLEXOLOGY**

Do you have problems with?

- Corns
- Verrucas/Warts
- Hard skin/Callus/Fissures
- Nail Cutting
- Thickened Nails
- Fungal infections/Athletes Foot
- Nail Pain
- Diabetic Feet Management
- Dressings and padding to aid healing and comfort.

**Reflexology session can be booked separately.**

Kate Lord Dip: MFHP IIHHT  
 Medical Foot Health Practitioner  
 & International Institute of Health  
 & Holistic Therapies.

Fully insured, DBS checked,  
 Governing Body CPS Certificates  
 available if you require.



I am a local lady who cares passionately about foot health care. Our feet are the most unappreciated and often most neglected parts of our body and yet they carry us through the whole of our lives!

**Kates Complete Feet**  
**Mobile Foot Practitioner**  
**Contact: 07557379099**  
**Email: [KatesCompleteFeet1@gmail.com](mailto:KatesCompleteFeet1@gmail.com)**



## Swimming Lessons Private/Group (up to 5)

### HEDLEY WOOD

Contact Helen 07779 255669  
info@helenclaireswimclub.co.uk

for more information



## Ant The Lawn Ranger

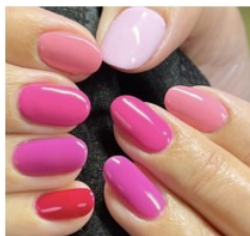
For grass cutting & garden  
maintenance call:

**Antony Jarvis**

**Mobile: 07990016467**

**Email:**

**antony2191@googlemail.com**



I am a Nail Technician specialising in natural nails. I work from a tranquil home salon in Week St Mary. I am passionate about looking after the health of your natural nails so exclusively use CND Shellac – a gel polish that causes no damage to the nails. Flexible working hours to suit your needs.

- CND Shellac Manicures and Pedicures
- CND Vinylux nail polish
- Callus Peel, a safe gentle treatment for hard skin removal on the feet
- Nail Art
- Healthy Nails Programme (for nail biters)

Contact me today

**0775 1094209**

**Tracyann Hutchins**

Stoneleigh, Week St Mary, Cornwall, EX22 6XA

email: info@izzyb.co.uk

Website: www.izzyb.co.uk

Facebook: www.facebook.com/izzybnails

Instagram: www.instagram.com/izzybnails



# DENISE WELLINGTON

## FUNERAL SERVICES

COMPASSIONATE, CARING,  
TRUSTED & PROFESSIONAL

Memorials | Pre-Paid Funeral Plans

24 Hour Contact 01288 359277



Dementia  
Friends  
An Alzheimer's Society initiative

Golden Charter  
Smart Planning for Later Life



denisewellingtonfunerals.co.uk  
enquiries@denisewellingtonfunerals.co.uk



# Greenfield

engineering

**CREATE YOUR FUTURE WITH A  
CAREER IN ENGINEERING**

**WANT TO >>  
KNOW MORE?**

Scan the QR code opposite to visit our careers site  
or get in touch with us via the below.



**T: +44 (0)1409 254400 | E: careers@greenfieldengineering.co.uk**  
**CAREERS.GREENFIELDENGINEERING.CO.UK**





**Jammin Nights**  
**Mondays & Wednesdays**  
**From 8.00pm**

## THE BRIDGE INN

**Telephone**  
**Pam**

**01409 828119**

*(please note change of number)*

**General Knowledge Quiz**  
**Every Sunday Evening - 7.30pm**

**Maximum of 6 per Team**

**ALSO HOLIDAY FLAT TO LET**

**NOFIX-NOFEE**

**Tel: 01288 381061**



- \* No Charge for Local Call Out
- \* Home and Office Visits
- \* Virus and Infections Fixed
- \* Weekend Repair Service
- \* Refurbished Systems for Sale
- \* System Restore & Data Retrieve

**Systems**  
**Repaired**  
**From**  
**£25**

**Computer Repair Service**

**[www.nofix-nofee.net](http://www.nofix-nofee.net)**

**NEATE FEET**

**CLAIRE & SIMON NEATE DIPCFHP**

**For all your foot health needs**

**Professional footcare in the comfort of your own home**



- \* Painful Callus Reduced
- \* Ingrowing Toenails
- \* Paddings and Dressings
- \* Reflexology

- \* Toenail Clipping
- \* Painful corns removed
- \* Verrucae Treatment

**Contact: 07968232344/ 07870508867**

**ROB**

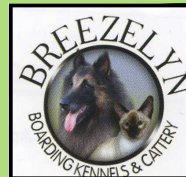
**Breezelyn Kennels**

**Titson Nr. Bude Cornwall EX230HH**

**Heated Kennels and Cat Chalets**

**Individual Runs - Large Play Runs**  
**Grooming Service**  
**Doggy Day Care**

**Email:**  
**Website:**



**Tel: 07731961653**  
**[info@breezelyn.co.uk](mailto:info@breezelyn.co.uk)**  
**[www.breezelyn.co.uk](http://www.breezelyn.co.uk)**



Planning Permission  
Building Regulations

Please feel free to contact us for a free  
no obligation visit and quote

☎ : 01288 352121

✉ : [info@rarowe.co.uk](mailto:info@rarowe.co.uk)

🌐 : [www.rarowe.co.uk](http://www.rarowe.co.uk)



## SHORT & ABBOTT LTD Agricultural Engineers

Sales, Service & Parts for all  
makes of Tractors  
and Machinery and  
Garden Machinery

Mill Road, Bridgerule,  
Holsworthy, Devon EX22 7EL

Tel: 01288 381485

[www.shortandabbott.co.uk](http://www.shortandabbott.co.uk)

[shortandabbott@outlook.com](mailto:shortandabbott@outlook.com)



Deanna Spiby  
Private  
Healthcare  
Assistant

07539 663189

[deanna.spiby@hotmail.com](mailto:deanna.spiby@hotmail.com)

### OUR SERVICES:

- Assisted living
- Independent living
- Dementia care
- Respite care

Professional & Certified  
Home Care Services

## DIAMOND CLEANING SERVICES

Carpets, Upholstery  
End of Tenancy  
Builders &  
One Off Cleans  
Hard Floor Cleaning

**01409 254816**

or

**07855 275088**

[www.diamond-cleaning-services.com](http://www.diamond-cleaning-services.com)



## SALLY'S .MOBILE DOG GROOMING

BATHING DRYING CLIPPING  
HANDSTRIPPING NAIL CLIPPING OF  
SMALL - MEDIUM DOGS. HOLSWORTHY /  
BUDE and surrounding area call



07969837552. Or 01288 382988 For a  
quote and chat about you dogs needs

## J&P PLUMBING HEATING & Home Maintenance

Telephone Paul:  
**01288 381085**  
07500876642  
07500708650



**Call Out**  
**24**  
hr

**Oil Boiler Service and Repairs**



## Dog Walking & Pet Care Services

Find me on 

Professional/ Friendly/Reliable & Affordable



Covering  
Bridgerule &  
all surrounding  
areas



 Fully insured, pet first aid  
trained & DBS checked

 Group & Solo dog walking

 Pet Pop-in Service for all  
animals big & small

 Only walk a limited number of  
dogs at any one time



Email: [info@pawrus.uk](mailto:info@pawrus.uk)  
Telephone: 07861991770  
Web: [pawrus.uk](http://pawrus.uk)

## Slimming World

taste  
the  
*freedom*



Contact your local Slimming World Consultant  
and join a warm and friendly group today!

NEW VENUE

Bude

Bude Rugby Club  
Wednesdays  
5.30pm & 7.00pm

Holsworthy

Holsworthy Memorial Hall  
Tuesdays  
5.30pm & 7.00pm  
Thursdays  
9.00am & 10.30am



touching hearts, changing lives

 [slimmingworld.co.uk](http://slimmingworld.co.uk)



# **Man Friday**

**Carpenter & Building Services**

**No Job Too Small**

*Free Quotes—Full Insurance Cover*

**Call Dave on:**

**01288 3815 07 or 07761 055071**







## Lufflands Caravan Park

*'Peace & Tranquillity in the Heart of  
the Beautiful Devon Countryside'*

Our family owned and run exclusive caravan  
park offers the personal, friendly touches that make it your home from home!

**Catering Exclusively for: Holiday Home Ownership Holiday Home Hire &  
Annual Touring Caravan Pitches**

Cosy Bar catering for guests & visitors

Available for small functions

Email: [maria@lufflands.com](mailto:maria@lufflands.com)

[www.lufflands.com](http://www.lufflands.com)

Tel: 01409 241426

Solden Cross, Holsworthy,

Devon, EX22 7PJ

(Between Holsworthy &  
Bradworthy)



## Home & Garden Maintenance Services

No Job too small

Internal & external  
jobs considered



Call Matthew Ward  
now on  
**07401 216816**  
for a free quote!



ARTHUR W. BRYANT  
FUNERAL SERVICE

BUDE  
T/ 01288 352282

CAMELFORD  
T/ 01840 214891

HOLSWORTHY  
T/ 01409 253000

INDEPENDENT FAMILY  
FUNERAL SERVICE

MEMORIAL  
MASONRY

OUR FAMILY CARING FOR YOUR  
FAMILY FOR OVER 50 YEARS

PRE PAYMENT FUNERAL  
PLANS



W/ AWBRYANT.CO.UK  
E/ CARING@AWBRYANT.CO.UK



## **Premium Carpets & Flooring** **Week st Mary**

We offer meetings at our showroom & home visits by appointment only.  
With a variety of samples covering all types of flooring & fitting.

Showroom: 01288 341870

Mark: 07947695875

Sarah: 07572654465

Colbay, week st Mary, EX226XG

[premium\\_carpets@icoud.com](mailto:premium_carpets@icoud.com)



## **JEWELLS CROSS SERVICE STATION AND RED POST GARAGE**

Servicing - MOT - Testing - Repairs - Bodywork Breakdown Recovery -  
Comprehensive Accessory Shops

Car Wash - Self Service Petrol & Diesel at Jewells Cross

Self Service Gas at Red Post Tel: 01288 381306

Jewells Cross Service Station Tel: 01288 381770



Red Post Work Shop Tel: 01288 381 340

MOTs Tel: 01288 381306



Providing the very **best** in service for **all** your motoring needs



# **AQUAFLAME**

## **PLUMBING & HEATING**

**INSTALLATION, SERVICING, REPAIRS**  
**GAS SAFETY CERTIFICATES, SURVEYS,**  
**ENERGY EFFICIENCY UPGRADES.**  
**OIL, GAS & RENEWABLES**



**WRAS**  
Water Regulations Advisory Scheme



**FREE QUOTATIONS**

**T: 07557 872 662**

# CBL STOVES

The Showroom, Unit 5  
Red Post, Bude, Cornwall  
EX23 9NW

01288 381852  
carl@cblstoves.co.uk  
www.cblstoves.co.uk



- Stainless Steel twinwall flues
- Chimney Lining
- Iskoern Pumice lining
- Fireplace alterations
- Stove Installations
- Wood, Multifuel, Gas & Electric Traditional & Contemporary Stoves & Fires
- Chimney Rebuilds
- Slate, Granite & Glass Hearths
- Wood & Ceramic beams & surrounds
- Floating Shelves



## J.J. LOGS & KINDLING

### TRANSIT TIPPER LOADS

Barn stored pre-cut lengths of  
9" or 12" long logs  
Hardwood /Softwood  
Full Loads/Half Loads

FREE kindling with each load

**TELEPHONE 07765091886**



## WHEELCHAIR AVAILABLE

If anyone has a family member or friend coming to stay who may be in need of a wheelchair for a short period. The hall has one that can be made available.

Contact Sheila 01288 381350 or a member of the hall

Mobile 07493 047597 Tel. 01409 211635

Professional Window & Gutter Cleaning

Brett's

**Gleaming**  
**Glass & Gutters**

Brett Debell, Chapmans Farm House, Chapmans Well, PL15 9SG.



**Water Fed Pole Window  
Cleaning System using  
Heated Purified Water**

**Gutter Cleaning**

**Soffit & Fascia Cleaning**

**Available to clean  
indoor windows**

**All work carried out from  
ground level and fully insured**

## M. A. G. Double Glazing Repairs

- ◆ Replacement of Misty or Broken Glass Units.
- ◆ Replacement of Hinges, Handles, Locks and Seals.
- ◆ Letter Boxes and Cat Flaps Installed.
- ◆ Installation of Fascias, Soffits and Gutters.

Over 15 Years Experience

Call **Mark** for friendly advice  
and a no obligation quotation:



**07969 234161**

**JON AND HEATING  
PLUMBING PIPER**

DISABILITY ADAPTATION SPECIALISTS

**T: 01288 381 536**

**M: 07825 698 529**

**Info@jonpiper.co.uk**



**City & Guilds**



*P & P*

*Home  
Helpers*



**For all your cleaning, ironing, grass  
cutting, gardening, painting and more!**

**For a quote please call - 07812 454 156**

## **No Transport?**



### **RING AND RIDE**

- Door-to-door minibus service for all ages, wheelchair & scooter accessible

### **CARS FOR CARE**

- Door-to-door service for medical appointments, 50p per mile

### **HERE FOR HIRE**

- Mini Bus Hire for Community Groups & Charities
- £75/day - £50/evening , self drive


Call

**01409 259001**

[office@holsworthy ruraltransport.co.uk](mailto:office@holsworthy ruraltransport.co.uk)

The Carroll Suite, Holsworthy Memorial Hall, Holsworthy EX22 6DJ





**Julia's**  
**Holistic Treatments**  
For Mind, Body & Soul

**Julia Trayford**  
A Holistic Therapist with ITEC Qualification

juliatrayford@gmail.com  
01288 381680 or 07990 554370



## **Humphrey Pullar**

**PROFESSIONAL CHIMNEY SWEEP**  
**NACS REGISTERED**

**Full Brush and Vac Service    Birds Nests Removed**  
**Smoke Testing Appliance Servicing**  
**Pots, Cows and Guards Fitted**

**Tel: 01409 240138**  
**email: humphreysweep@mac.com**

**Mob: 07984406290**  
*Proud to be of service*



- Dry stone wall repairs
- Retaining dry stone walls
- Stone work with mortared joints
- Earth stone hedging
- Landscaping
- General construction & ground works
- Garden features

**FREE QUOTES**  
**Call Dan on**  
**07968 996191**



**www.dbwalling.co.uk**

**WALLING | LANDSCAPING | CONSTRUCTION**



**T: 01409**  
**253 533**

**2 Kingfisher Units**  
**Holsworthy Ind' Est'**  
**Holsworthy, Devon EX22 6HL**

**www.renewsw.co.uk**

**QUALITY WINDOWS, DOORS**  
**CONSERVATORIES**  
**SOLAR PV & ROOFLINE**

**Your Local Renewable Energy Specialists**





# M&S Fencing

01288 381311

- Agricultural, Equestrian, Garden, Industrial & Security fencing
  - Groundworks
  - Drainage & Ditching
  - Concrete laying
  - Artificial grass
    - Patios
    - Decking
  - Landscaping
  - Retaining walls
    - Driveways
    - Paving
    - Tree care
  - Hedge laying
  - Digger hire



**Call us for your  
FREE QUOTE**



**TORNADO**® Professional  
contractors network



**BUDE EYE CENTRE**  
QUALITY . VALUE . COURTESY . SERVICE

### YOUR MODERN INDEPENDENT OPTOMETRIC PRACTICE

Bude Eye Centre, established in 2005, are equipped with up to date equipment, a wide selection of eyewear and latest contact lenses to suit individual needs. We offer same day service and also hearing aid services.

#### WE OFFER:

- ✓ NHS & Private Eye examinations
- ✓ Contact lens specialist
- ✓ 3D OCT Screening available
- ✓ Regular hearing service, including free assessments
- ✓ Honest and expert advice on frame selection
- ✓ Wheelchair friendly practice

Telephone: 01288 350041  
info@budeeyecentre.co.uk



**Wayne's  
Wheels SW**



Sales | Servicing | Repairs

**07472 302902**

• Quality used car sales sold with National warranty & breakdown cover

• Vehicle servicing & repairs carried out by qualified mechanic with 10+ years experience

• Industry leading tools & diagnostic equipment used

• MOT's

• Vehicle detailing



Located 2 miles outside of Bridgerule

Follow us on Facebook @wayneswheelssw

07472 302902



**www.wayneswheels.co.uk**

### Why not host your next party at:



**Birthdays!**  
**Anniversaries!**  
**Christenings!**  
**Kids Parties!**  
**Garden Parties!**  
**Pool Parties!**



Contact Jay  
01288 381 272

jay@glebehousecottages.co.uk



**6 Luxury Self Catering Cottages**

**Swimming Pool, Tennis Court, Formal Gardens,  
Cellar Bar, Games Room & Plenty more!**



10% discount for friends and family of local residents.

01288 381 272

www.glebehousecottages.co.uk

jay@glebehousecottages.co.uk